



## M/Y MATSU



Length  
**37.00m**  
121.39 ft.



Guests  
**24**



Cabins  
**4**



Crew  
**6**

# M/Y MATSU



Fridge



Kitchen



Microwave



Shower



Sunbeds



Air Conditioning



Jacuzzi



Jetski x 2



Paddle Boards x  
2



Seabob x 2



Snorkeling Gear



Stabilisers  
underway



Television



Tender



Wifi





# EXTERIOR DESIGN





















# INTERIOR DESIGN







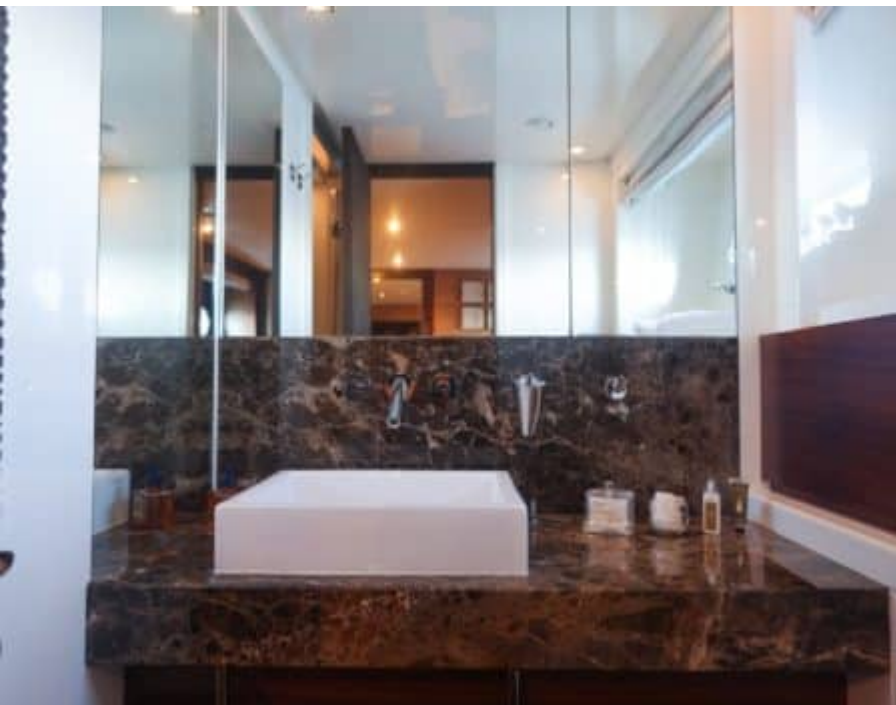




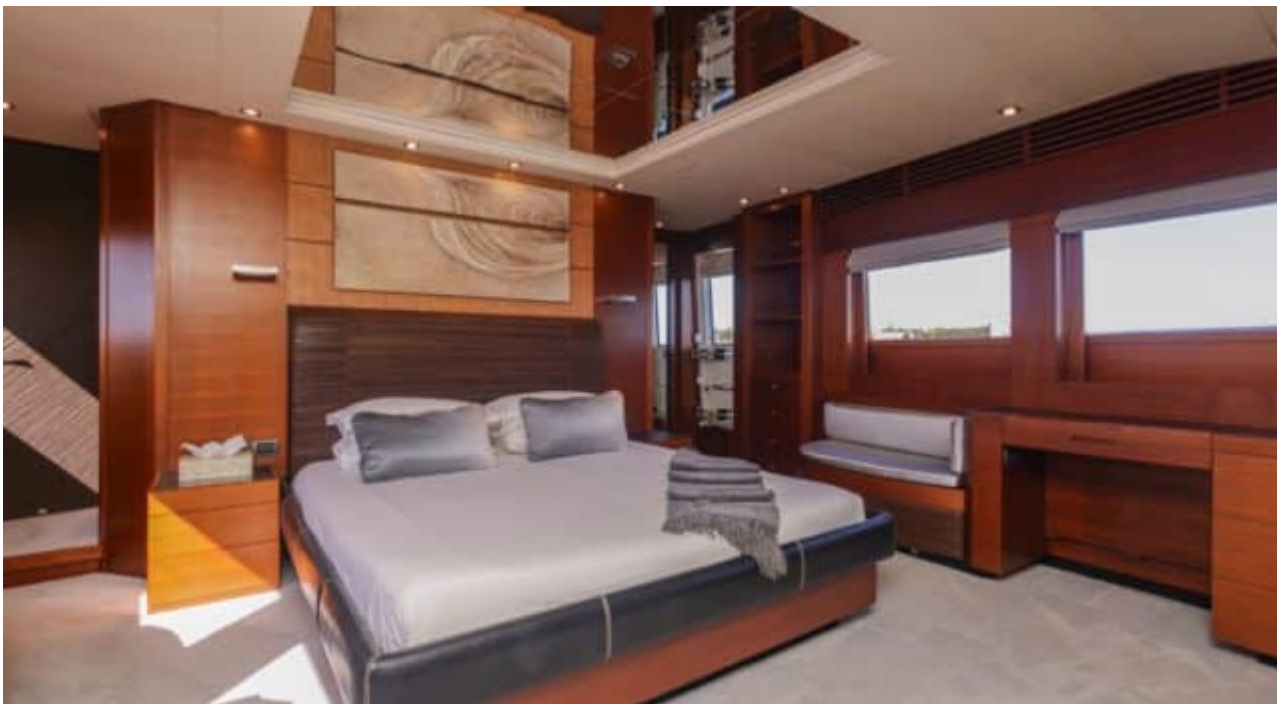
















# GALLERY LIFESTYLE







# Specifications



Low rate per day

16 500 €



High rate per day

18 000 €



Summer low rate per week

108 000 €



Summer high rate per week

108 000 €



Winter low rate per week

96 000 €



Winter high rate per week

96 000 €



Builder

Ancona Shipyard



Year built

2007



Year refit

2024



Length

37.00 m



Guests Cruising

24



Cabins

4

## Winter Cruising Area(s)

Corsica - Sardinia, French Riviera, Italy & Sicily, West Mediterranean

## Summer Cruising Area(s)

Corsica - Sardinia, French Riviera, Italy & Sicily, West Mediterranean

Crew

6

Max speed

31 knots

Cruising speed

20 knots

Fuel consumption

850 L/Hr

Type of cabins

4 (3 x Double, 1 x Twin)