


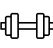
















M/Y CARMEN

- | | | | | |
|--|---|--|--|--|
| 
Air Conditioning | 
E-Foil | 
Fishing Gear | 
Gym Equipment | 
Jacuzzi |
| 
Jetski x 2 | 
Kayaking | 
Paddle Boards x 2 | 
Seabob x 2 | 
Snorkeling Gear |
| 
Stabilisers at anchor | 
Stabilisers underway | 
Tender | 
Wakeboard | 
Waterski |
| 
Yoga mats | | | | |



EXTERIOR DESIGN

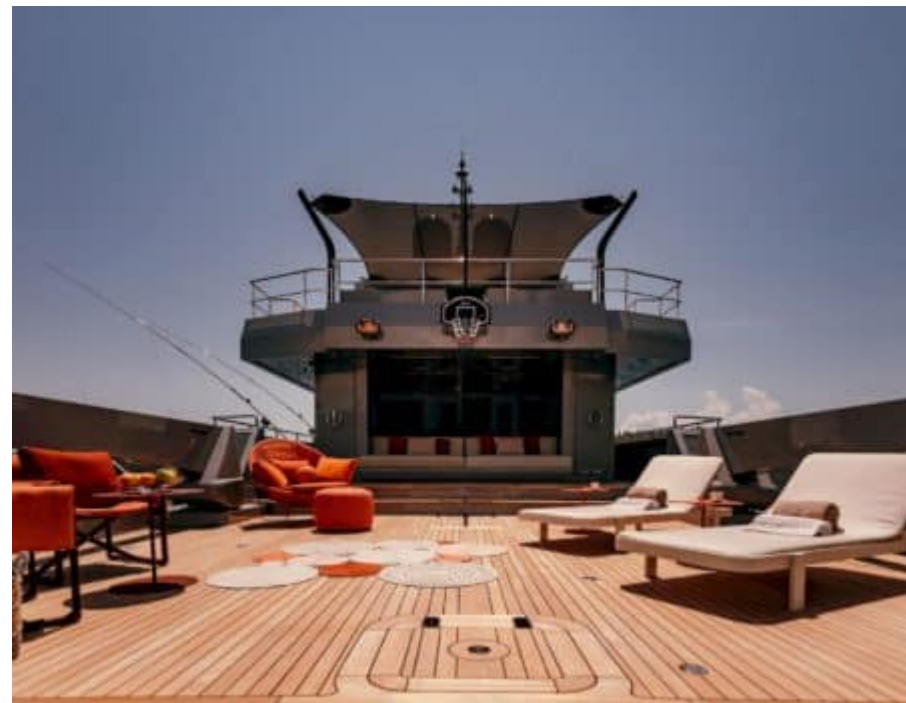
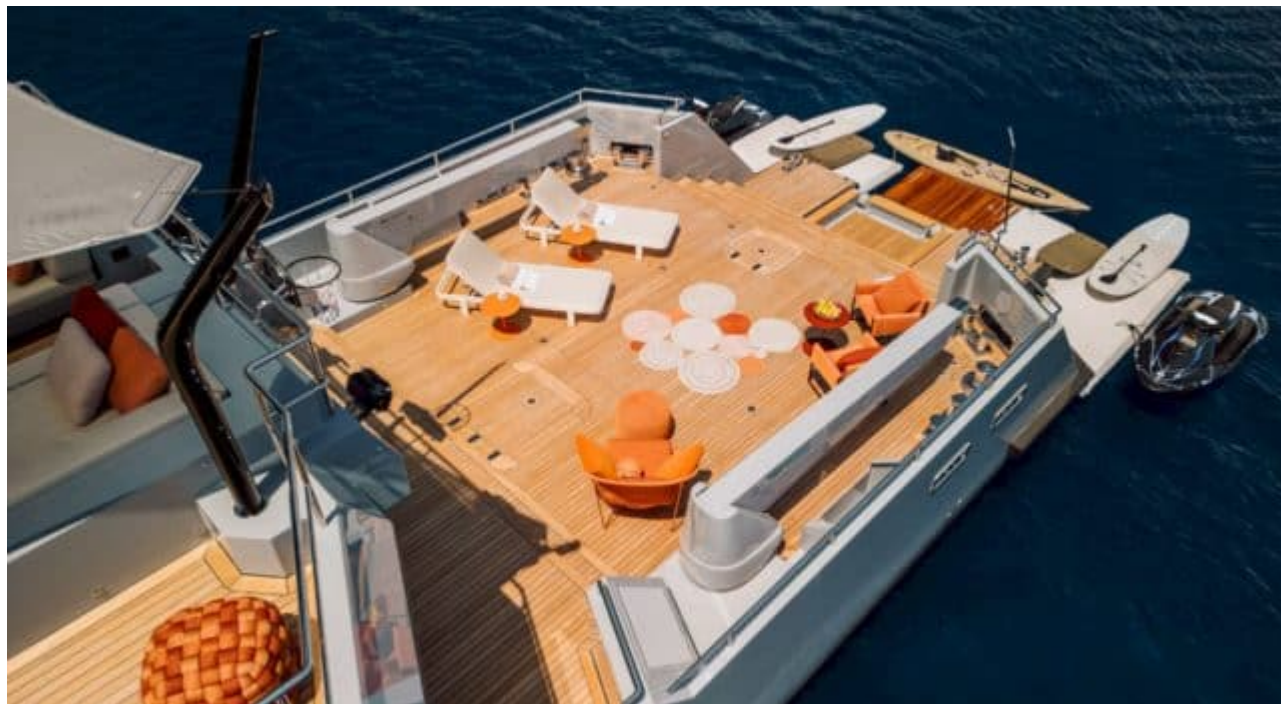






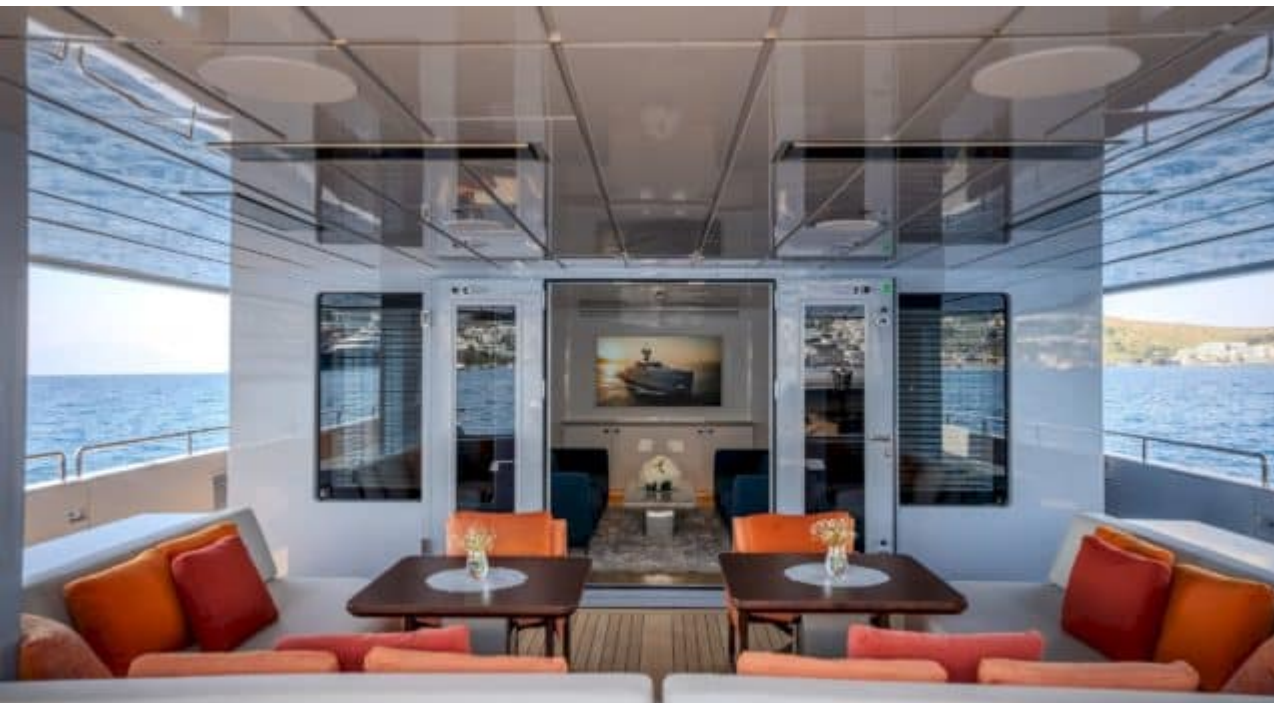














INTERIOR DESIGN

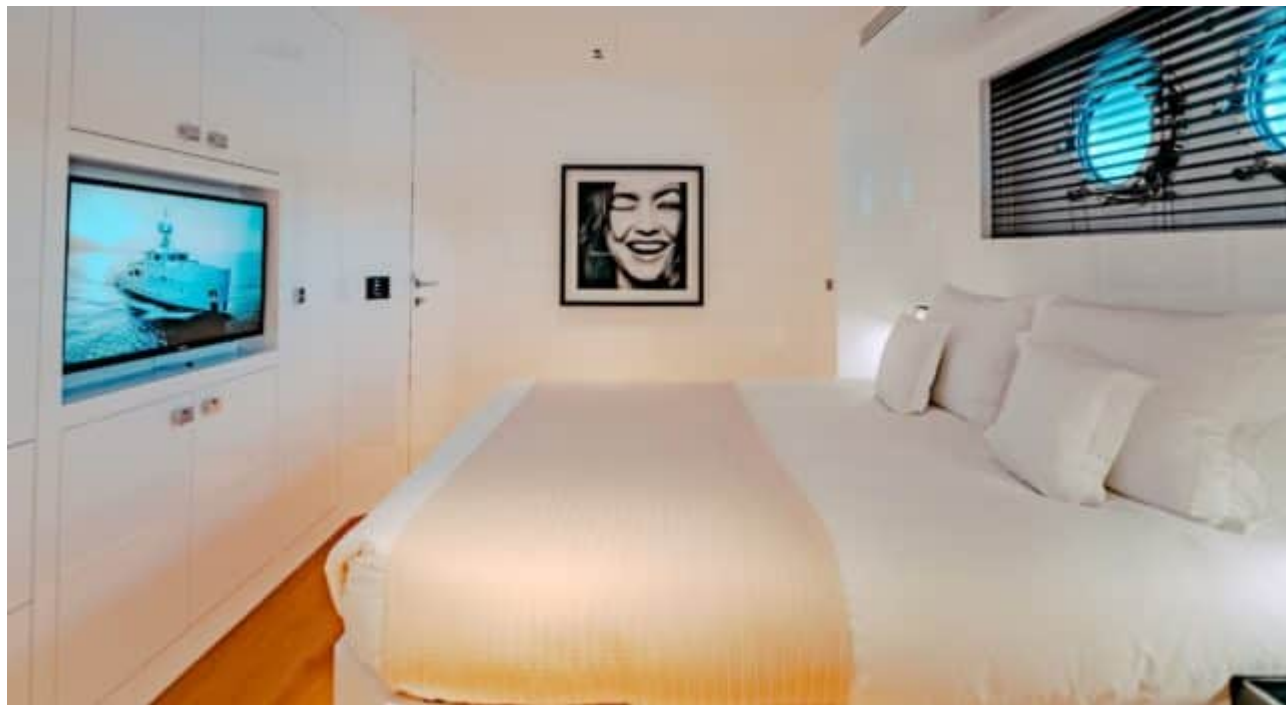














GALLERY LIFESTYLE







Specifications



Summer low rate per week

130 000 €



Summer high rate per week

145 000 €



Winter low rate per week

130 000 €



Winter high rate per week

145 000 €



Builder

Aegean Yachts



Year built

2025



Length

37.30 m



Guests Cruising

10



Cabins

5

Winter Cruising Area(s)

East Mediterranean, Greece, Italy & Sicily

Summer Cruising Area(s)

East Mediterranean, Greece, Italy & Sicily

Crew

7

Max speed

16 knots

Cruising speed

13 knots

Fuel consumption

250 L/H

Type of cabins

5 (3 x Double , 2 x Twin)