



M/Y OCEANA



Length
55m
180.45 ft.



Guests
12



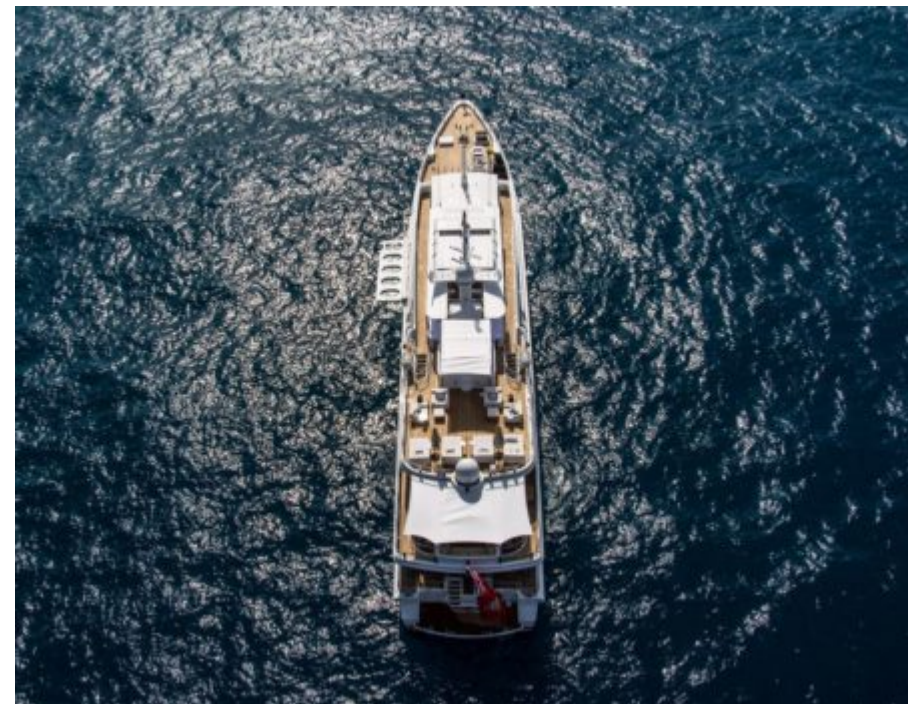
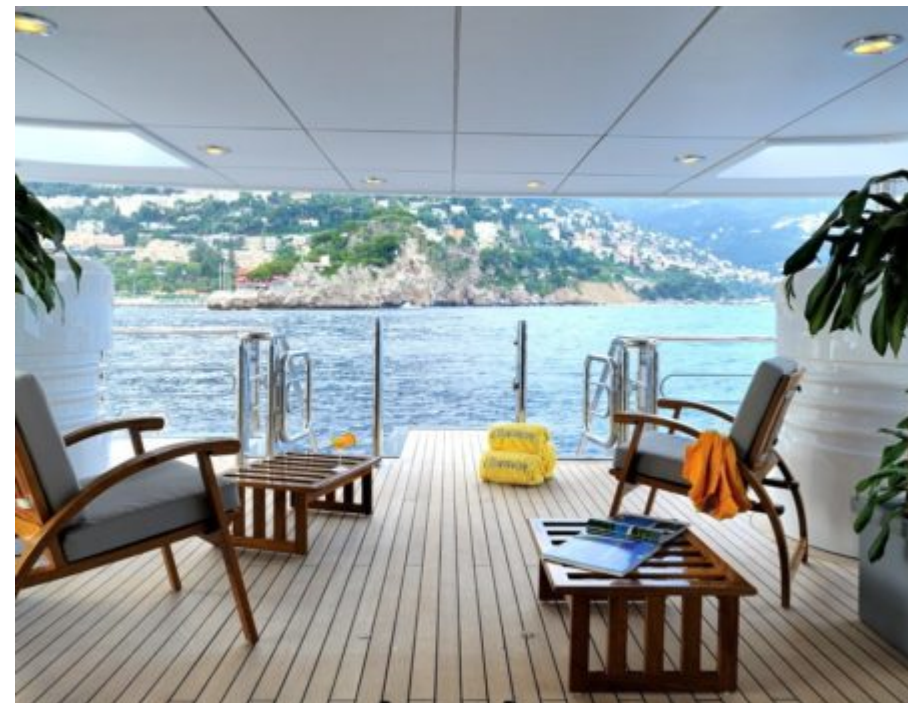
Cabins
5



Crew
12

M/Y OCEANA

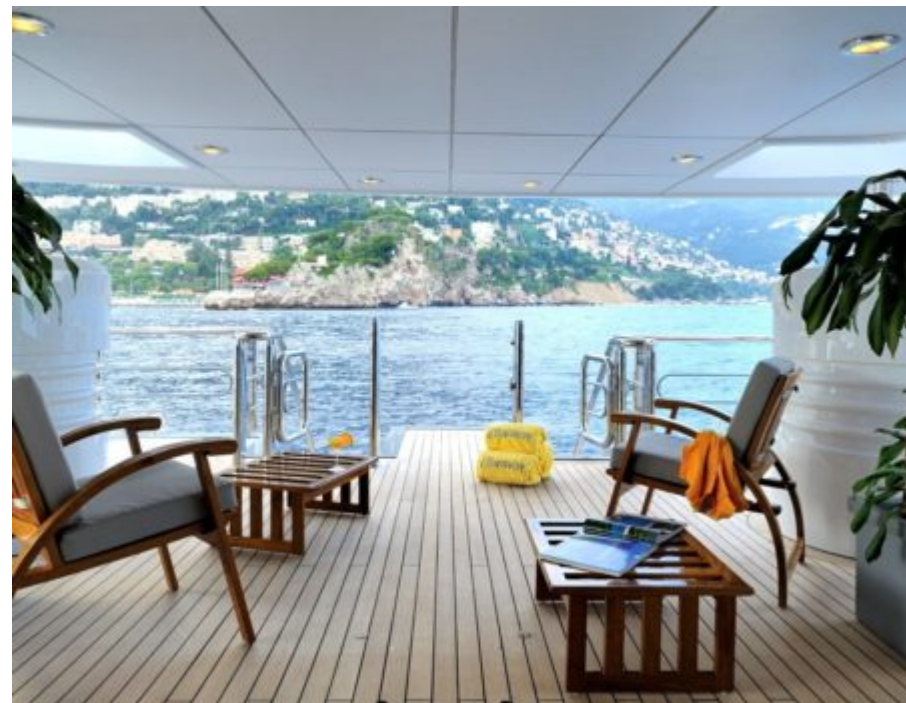
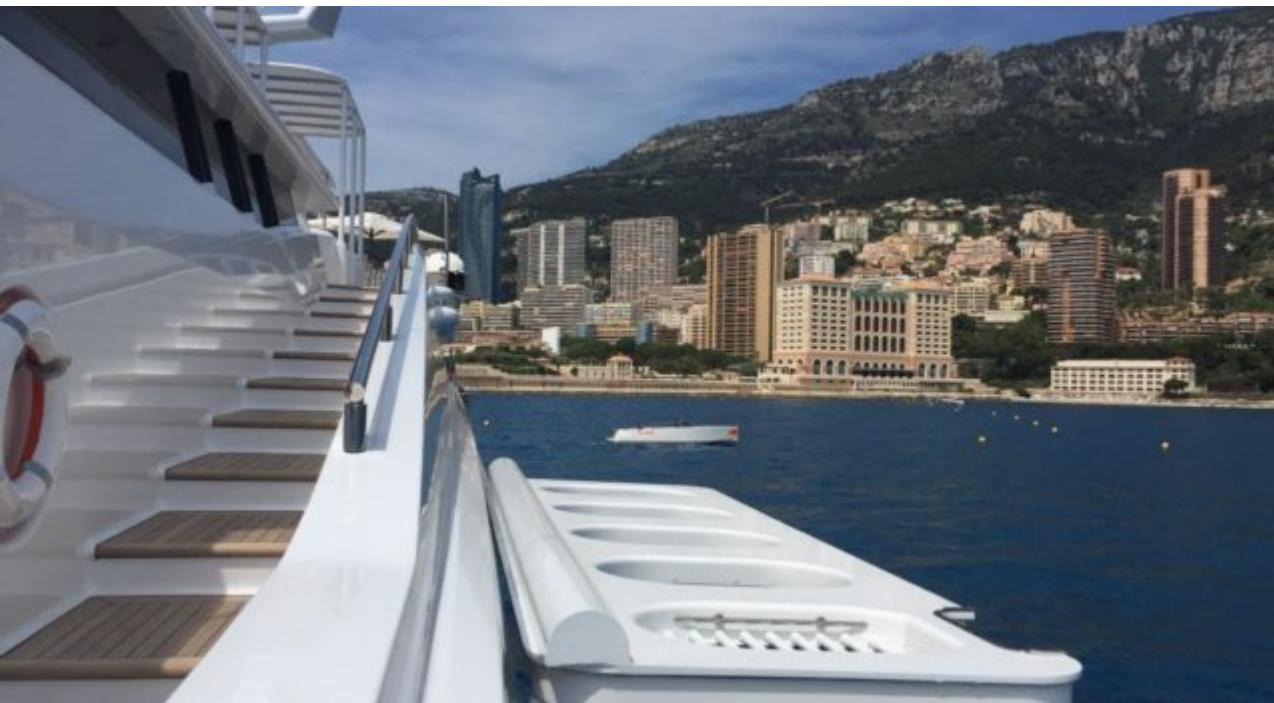
- | | | | | |
|---|---|---|---|---|
|  |  |  |  |  |
| Air Conditioning | Gym Equipment | Jacuzzi | Jetski x 2 | Kayaks x 2 |
|  |  |  |  |  |
| Paddle Boards x 2 | Seabob x 2 | Snorkeling Gear | Stabilisers at anchor | Stabilisers underway |
|  |  |  |  |  |
| Tender | Towable water toys | Wakeboard | Waterskis | Wifi |

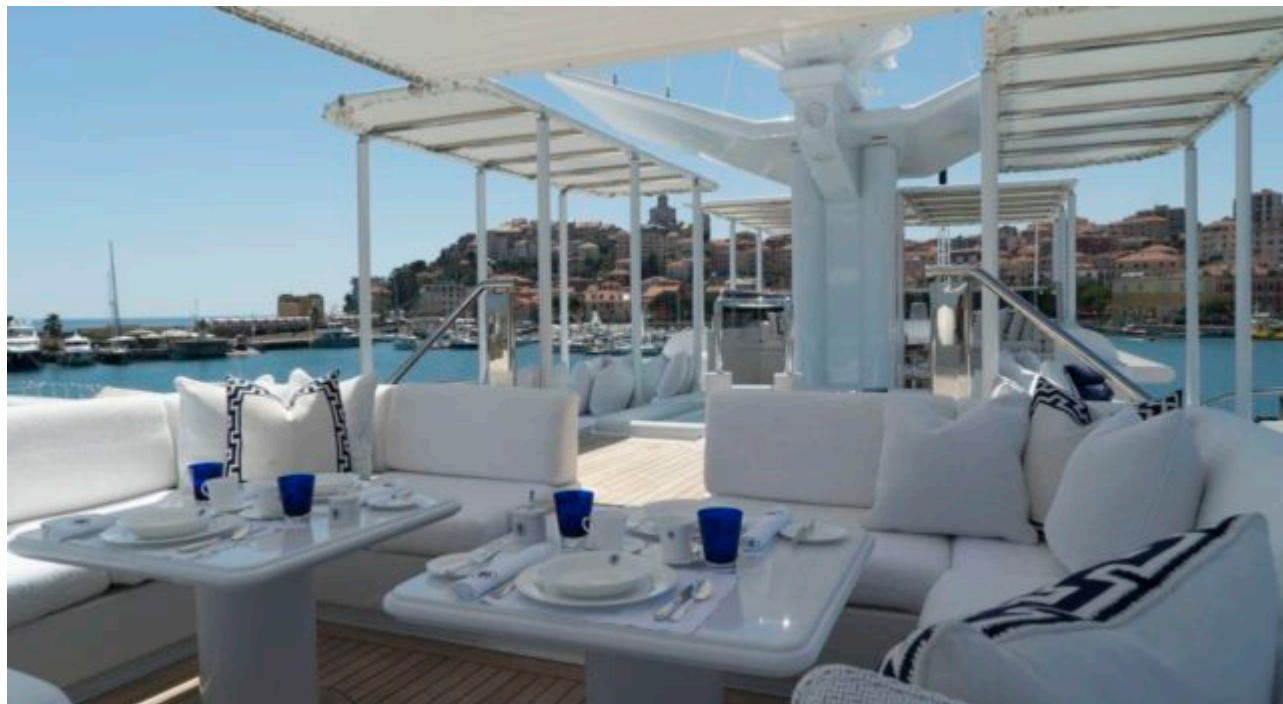


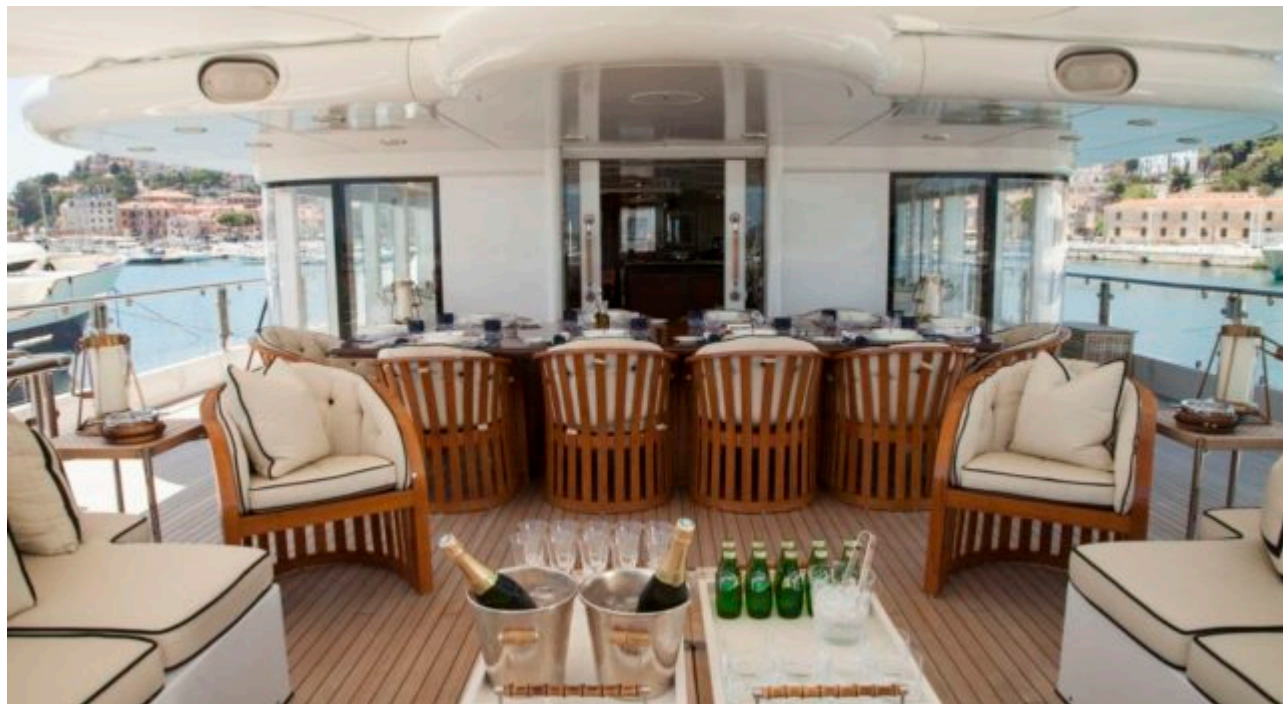
EXTERIOR DESIGN







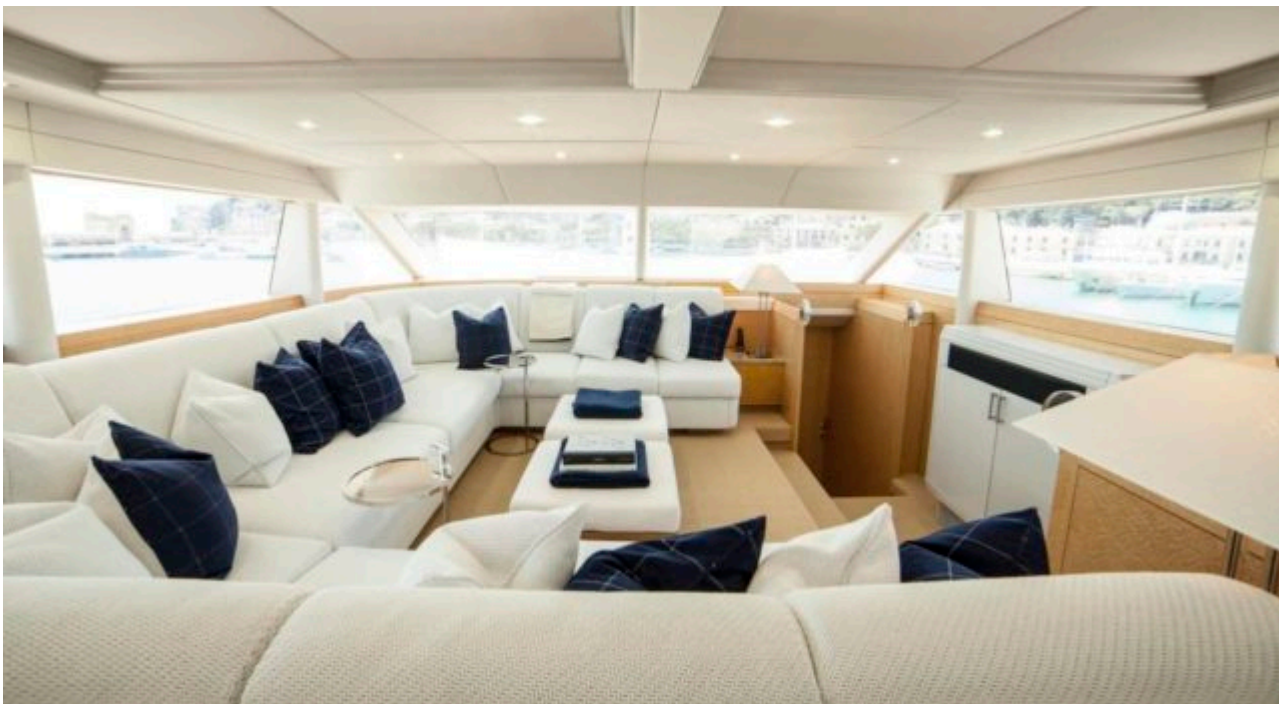






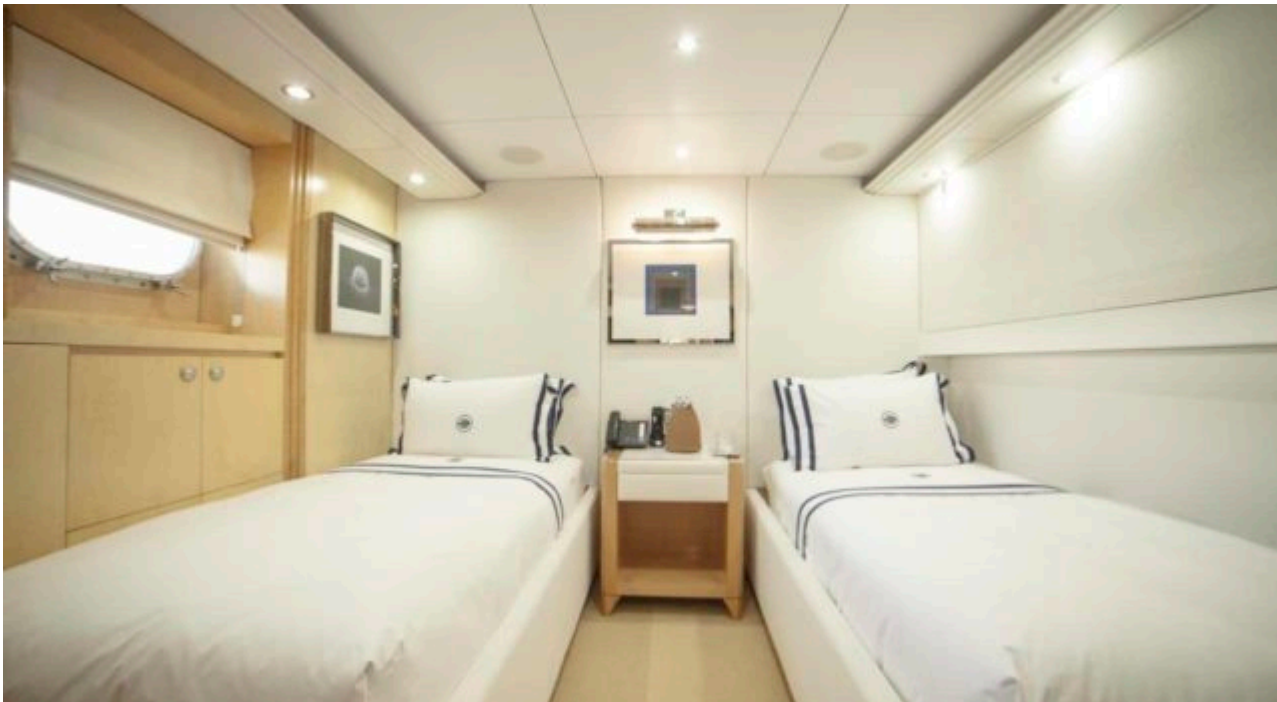
INTERIOR DESIGN











GALLERY LIFESTYLE







Specifications



Summer low rate per week

197 000 €



Summer high rate per week

217 000 €



Winter low rate per week

197 000 €



Winter high rate per week

217 000 €



Builder

Oceanfast



Year built

1991



Year refit

2016



Length

55 m



Guests Cruising

12



Cabins

5

Winter Cruising Area(s)

West Mediterranean

Summer Cruising Area(s)

Corsica - Sardinia, Croatia, East Mediterranean, French Riviera, Greece, Italy & Sicily, Spain & Balearics, Turkey, West Mediterranean

Crew

12

Max speed

20 knots

Cruising speed

12 knots

Fuel consumption

300 L/HR

Type of cabins

5 (4 x Double, 1 x Twin, 1 x Pullman)