



## M/Y SEAREX



Length  
**38m**  
124.67 ft.



Guests  
**12**









Cabins  
**8**



Crew  
**12**

# M/Y SEAREX

- |  |   |  |  |   |
|--|---|--|--|---|
| <br>8m+ tender boat<br>/ day boat | <br>Air Conditioning | <br>Banana    | <br>Jacuzzi | <br>Jetski   |
| <br>Kayaking                      | <br>Wakeboard        | <br>Waterskis | <br>Wifi    | <br>Windsurf |





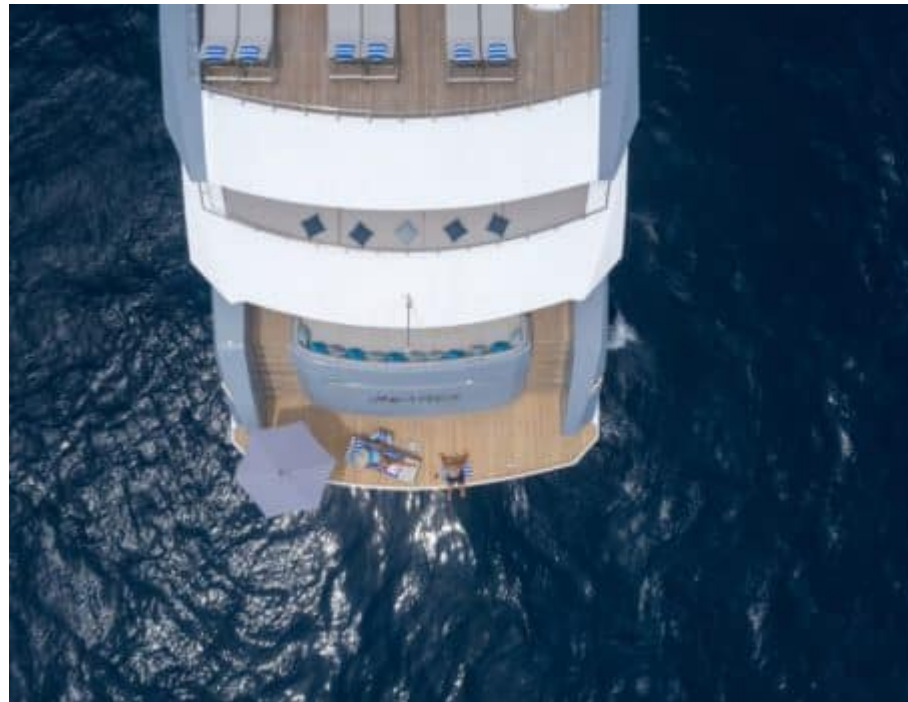
# EXTERIOR DESIGN

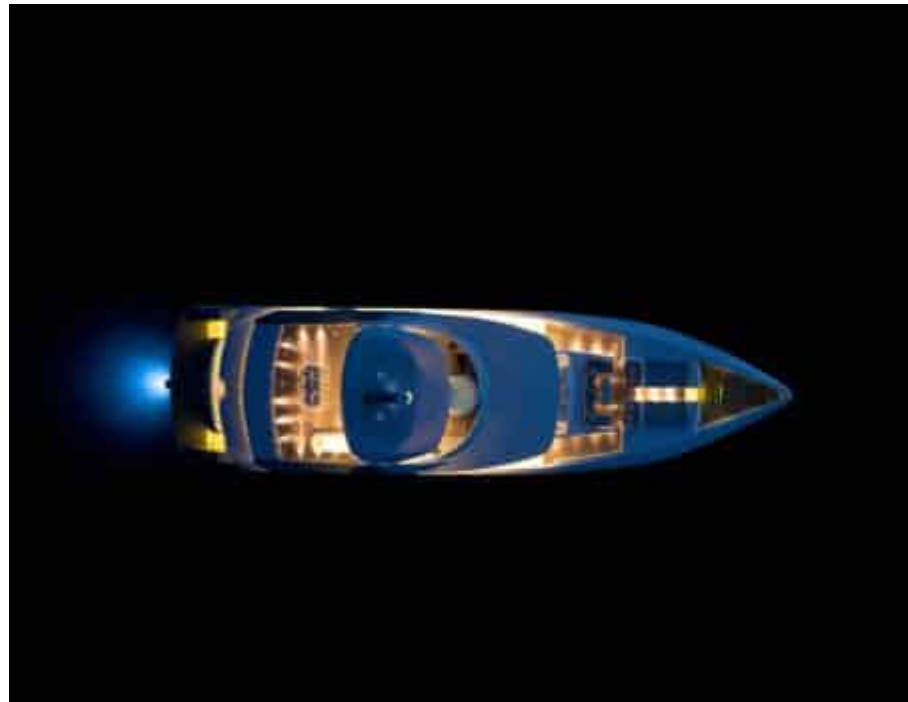
































# INTERIOR DESIGN





















# GALLERY LIFESTYLE

























# Specifications



Summer low rate per week

\$ 85 000



Summer high rate per week

\$ 85 000



Winter low rate per week

\$ 85 000



Winter high rate per week

\$ 95 000



Builder

T.A. Maldives



Year built

2018



Year refit

2021



Length

38 m



Guests Cruising

12



Cabins

8

Winter Cruising Area(s)

Indian Ocean & South East Asia

Summer Cruising Area(s)

Indian Ocean & South East Asia

Crew

12

Max speed

12 knots

Cruising speed

10 knots

Fuel consumption

120 Litres/Hr

Type of cabins

8 (2 x Double, 4 x Convertible)