



M/Y CHAKRA



Length
86m 282.15
ft.



Guests
24

























Cabins
20



Crew
30

M/Y CHAKRA

- | | | | | |
|--|---|---|---|---|
| 
8m+ tender boat
/ day boat | 
Air Conditioning | 
Elevator | 
Flyboard | 
Gym Equipment |
| 
Jacuzzi | 
Jetsurf | 
kayaks x 3 | 
Monoski | 
Paddle Boards x 2 |
| 
Seadoo
Seascooter (for diving) | 
Snorkeling Gear | 
Stabilisers underway | 
Tender | 
Towable water toys |
| 
Wakeboard | 
Water Trampoline | 
Waterski | 
Wifi | 
Knee board |
| 
Scubadiving | 
Water slide | | | |



EXTERIOR DESIGN





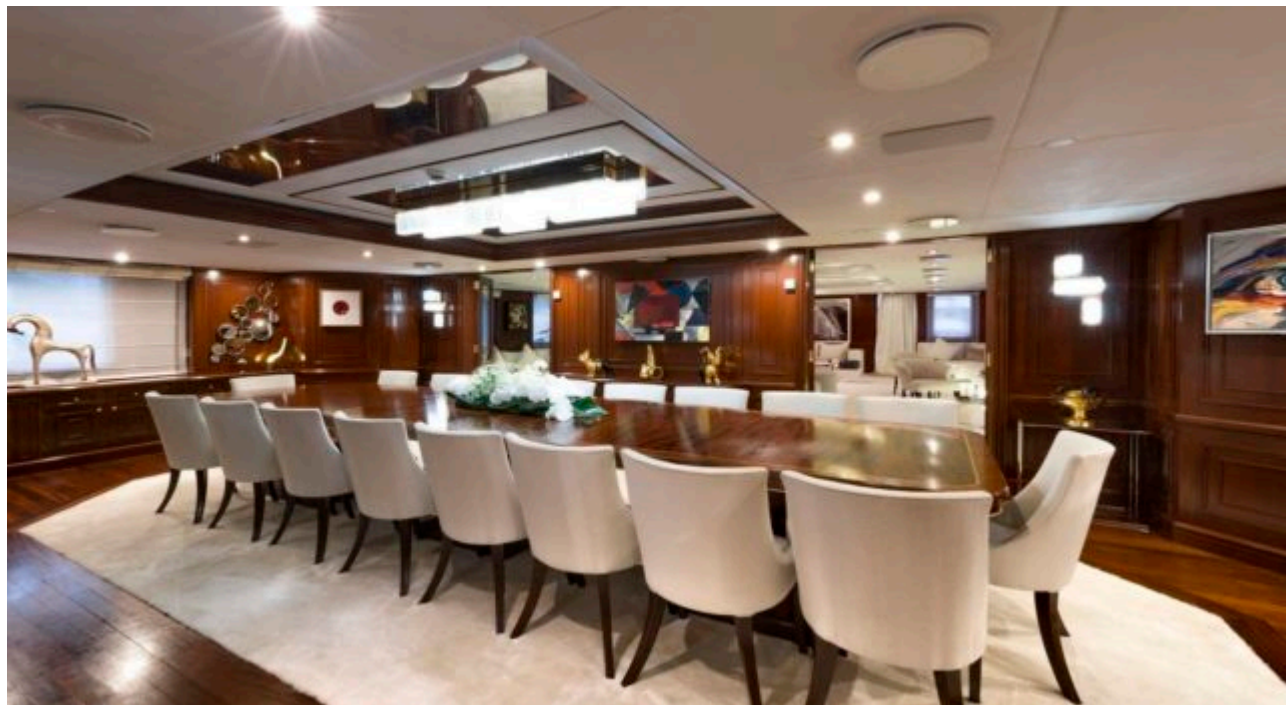






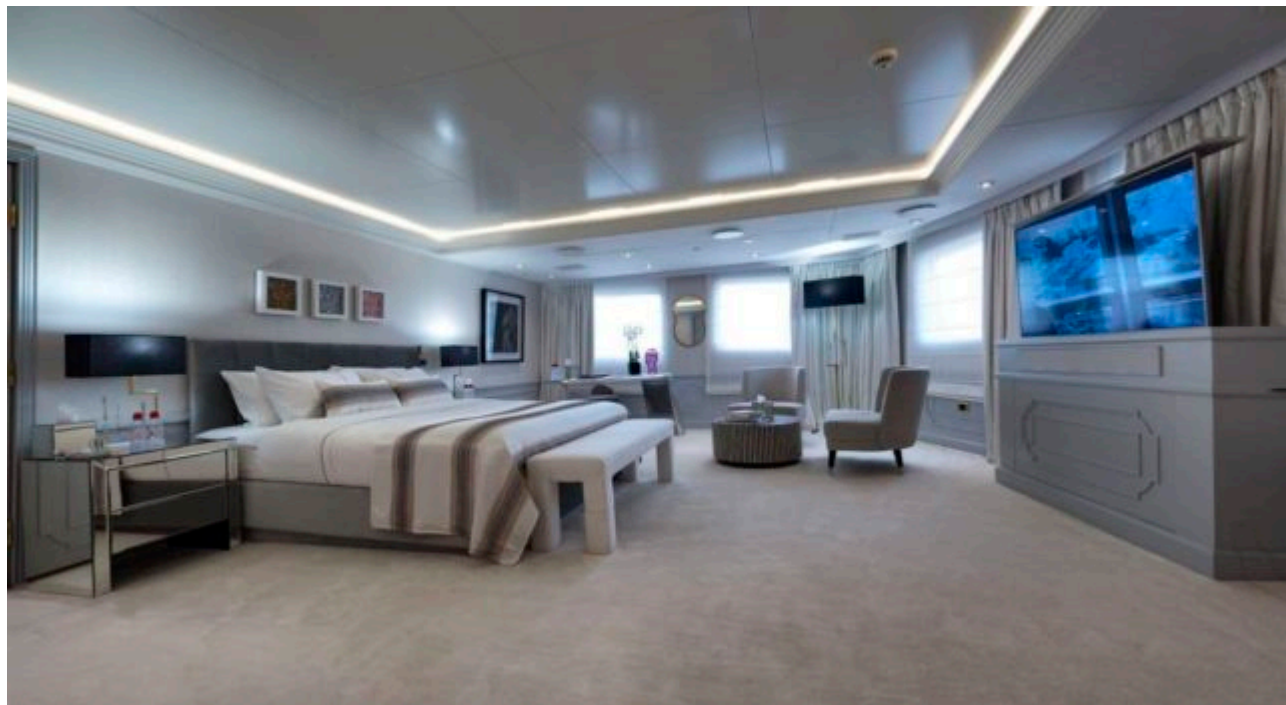
INTERIOR DESIGN









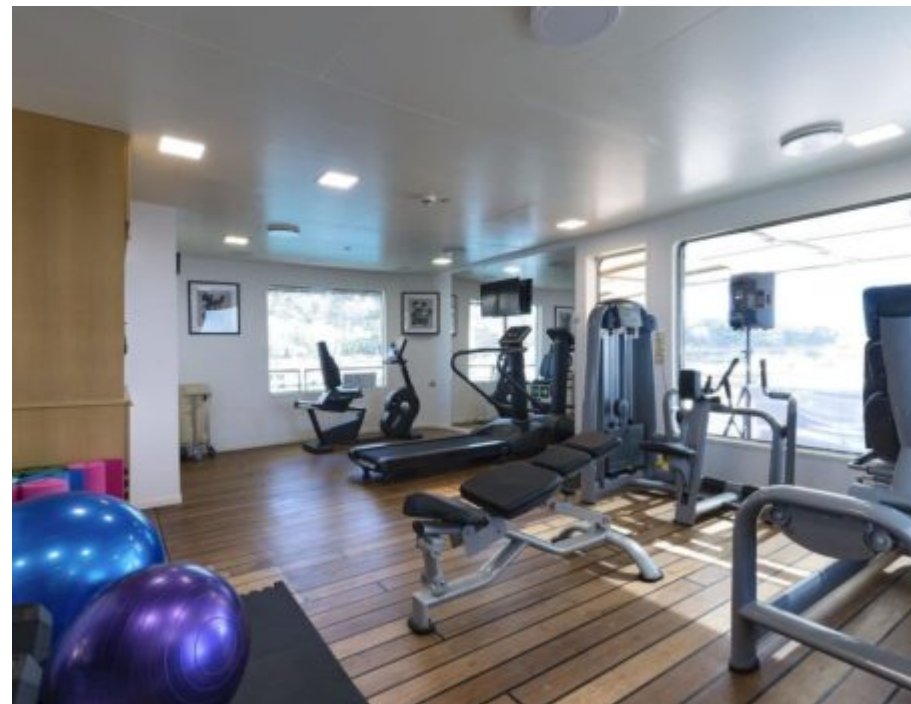
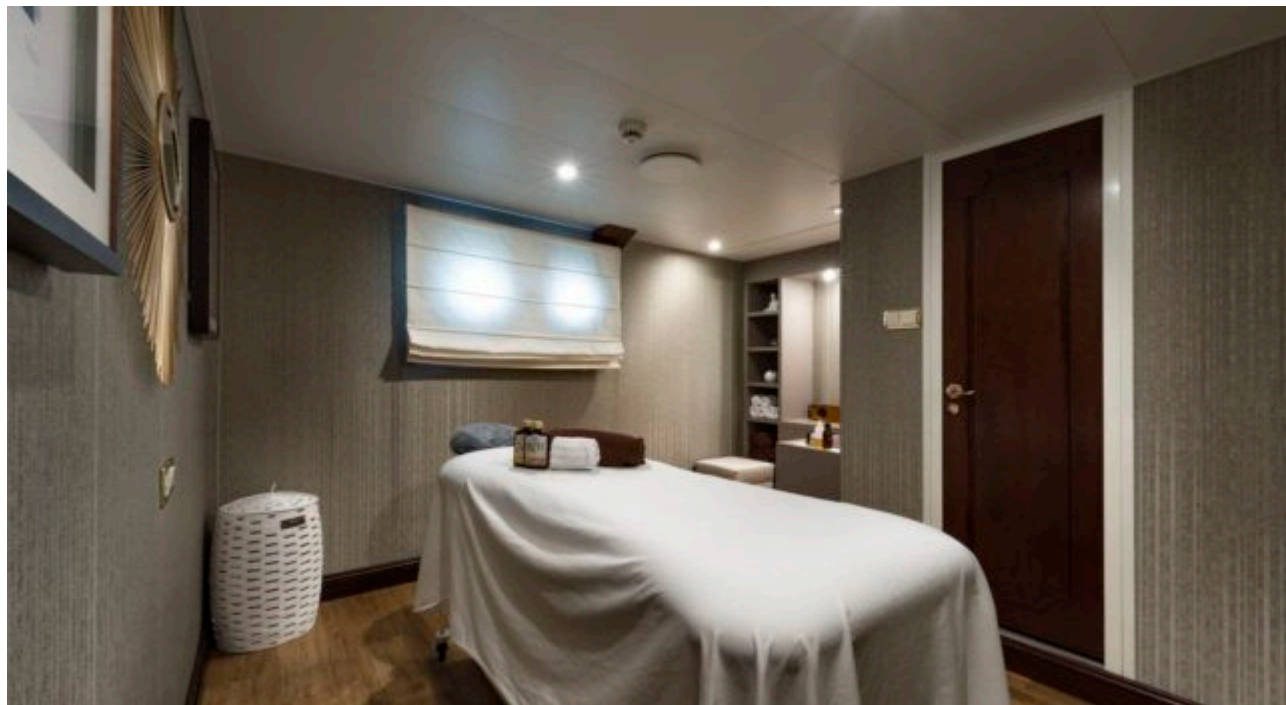






GALLERY LIFESTYLE







Specifications



Low rate per day

82 500 €



High rate per day

82 500 €



Summer low rate per week

495 000 €



Summer high rate per week

495 000 €



Winter low rate per week

495 000 €



Winter high rate per week

495 000 €



Builder

Devonport



Year built

1963



Year refit

2017



Length

86 m



Guests Cruising

24



Cabins

20

Winter Cruising Area(s)

Middle East / Arabia

Summer Cruising Area(s)

Corsica - Sardinia, Croatia, East Mediterranean, French Riviera, Greece, Italy & Sicily, Spain & Balearics, Turkey, West Mediterranean

Crew

30

Max speed

14 knots

Cruising speed

12.8 knots

Fuel consumption

800 Ltr/Hr

Type of cabins

20 (15 x Double, 4 x Twin, 1 x Single)