



## M/Y ROLA



Length  
**47.5m**  
155.84 ft.



Guests  
**12**



Cabins  
**5**



Crew  
**9**

# M/Y ROLA

- |   |  |  |   |  |
|---|--|--|---|--|
| <br>Air Conditioning   | <br>Flyboard        | <br>Jacuzzi               | <br>Jetski x 2           | <br>Paddle Boards x 2 |
| <br>Seabob x 2         | <br>Snorkeling Gear | <br>Stabilisers at anchor | <br>Stabilisers underway | <br>Tender            |
| <br>Towable water toys | <br>Wakeboard       | <br>Waterskis             | <br>Wifi                 |  |





# EXTERIOR DESIGN

















# INTERIOR DESIGN



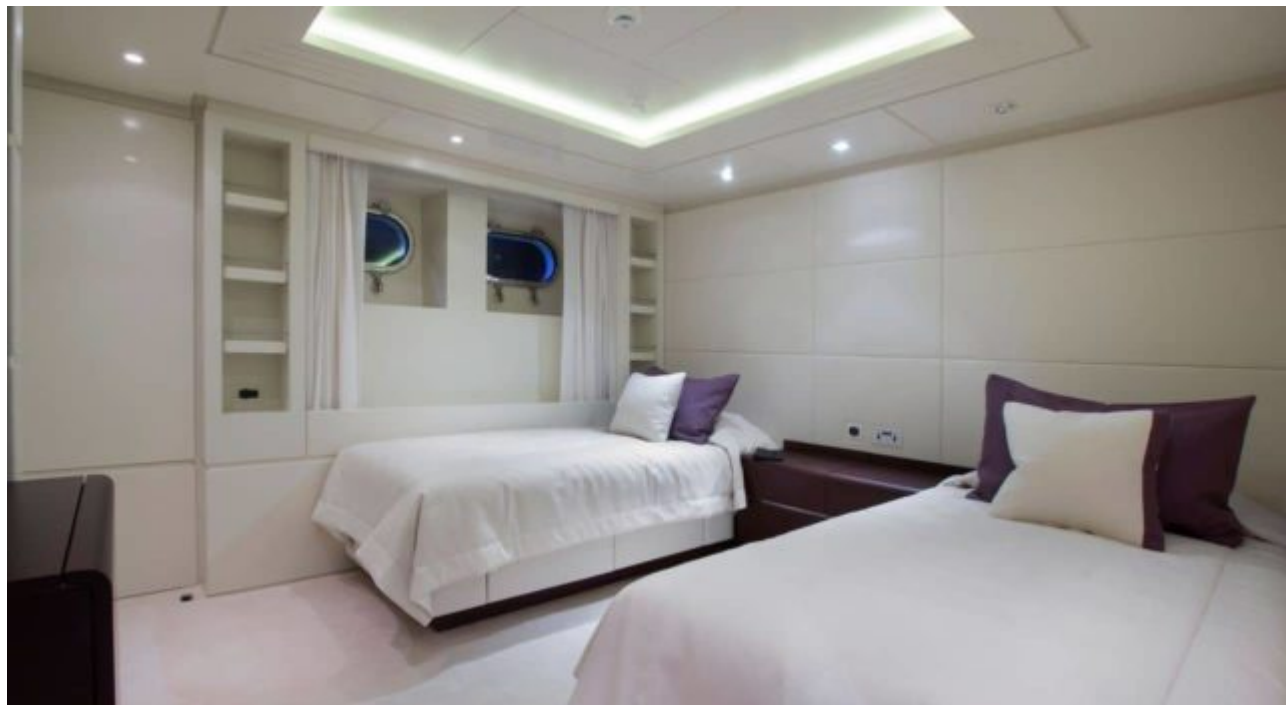














# GALLERY LIFESTYLE













# Specifications



Summer low rate per week

154 000 €



Summer high rate per week

175 000 €



Winter low rate per week

154 000 €



Winter high rate per week

175 000 €



Builder

Ancona Shipyard



Year built

2006



Year refit

2015



Length

47.5 m



Guests Cruising

12



Cabins

5

Winter Cruising Area(s)

East Mediterranean, West Mediterranean

Summer Cruising Area(s)

Corsica - Sardinia, Croatia, East Mediterranean, French Riviera, Greece, Italy & Sicily, West Mediterranean

Crew

9

Max speed

16.8 knots

Cruising speed

13.5 knots

Fuel consumption

670 Litres/Hr

Type of cabins

5 (3 x Double, 2 x Twin, 1 x Pullman)