



## M/Y AMAN



Length  
**29.10m**  
95.47 ft.



Guests  
**12**



Cabins  
**4**



Crew  
**4**

# M/Y AMAN

- |   |  |   |  |   |
|---|--|---|--|---|
| <br>Air Conditioning | <br>Drone           | <br>Gym Equipment      | <br>Outdoor Cinema        | <br>Paddle Board         |
| <br>Seabob x 2       | <br>Snorkeling Gear | <br>Sound System       | <br>Stabilisers at anchor | <br>Stabilisers underway |
| <br>Television       | <br>Tender          | <br>Towable water toys | <br>Wifi                  | <br>Yoga mats            |



# EXTERIOR DESIGN











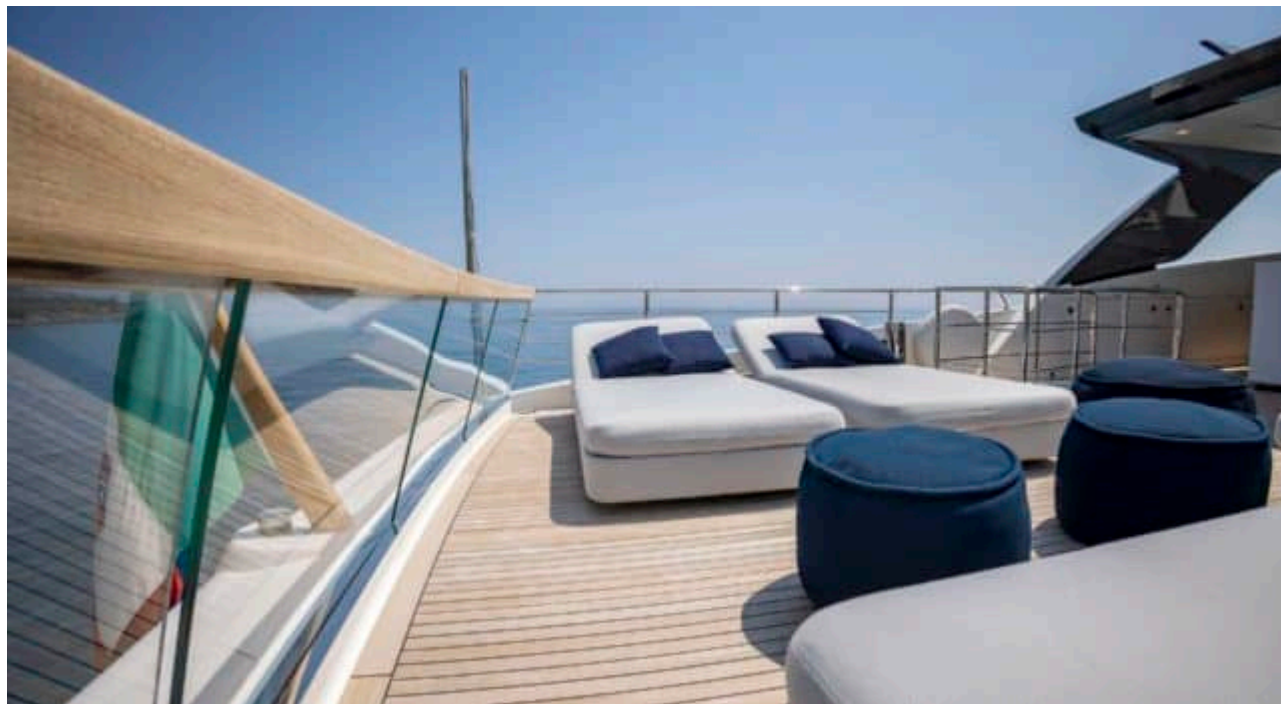




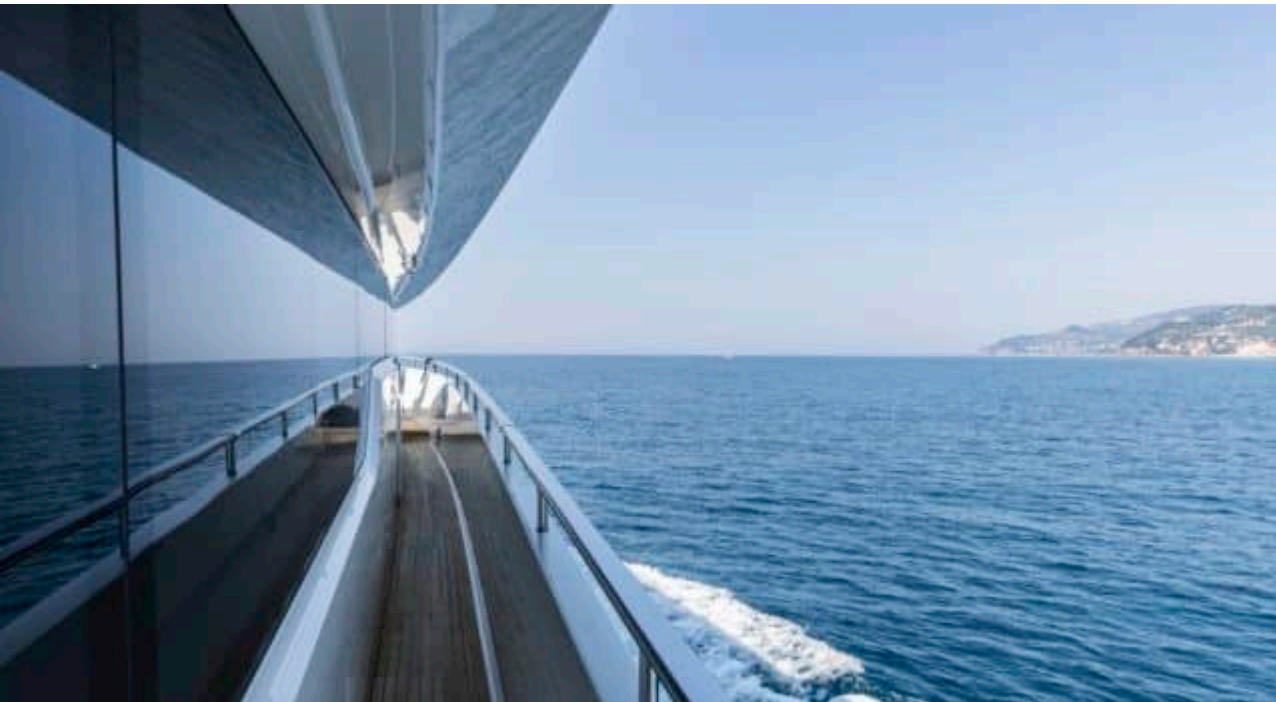
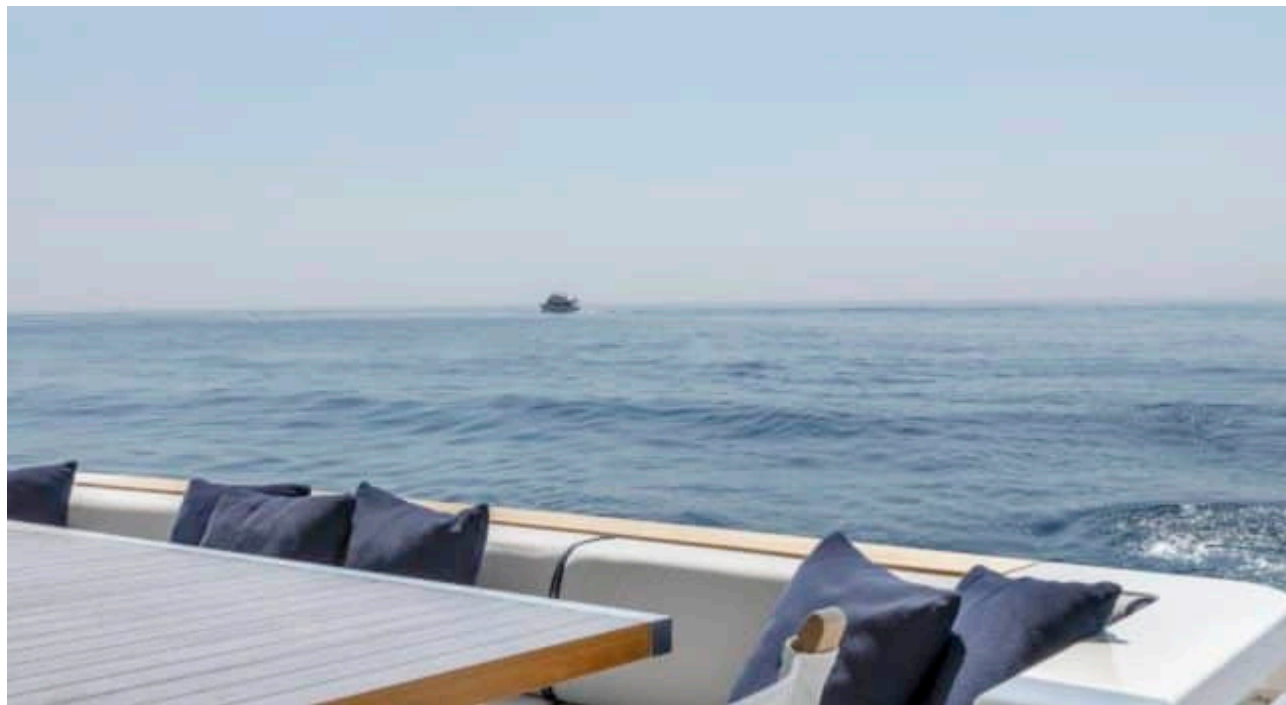










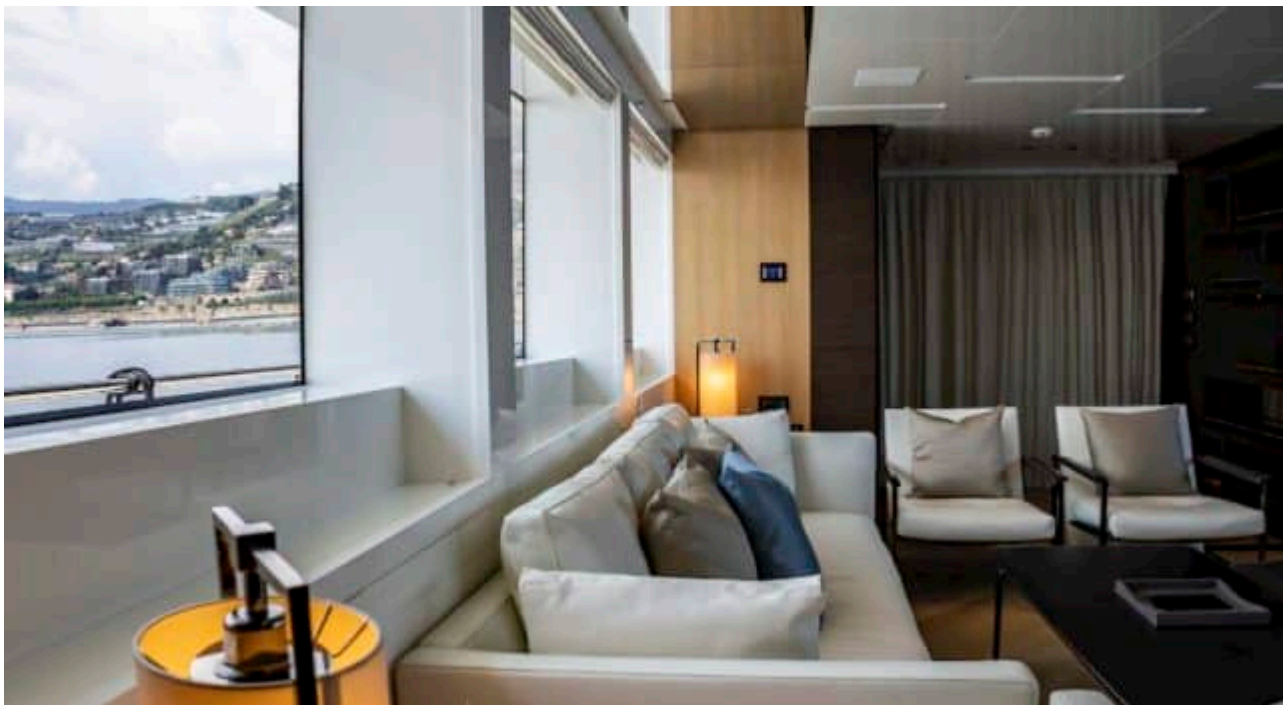




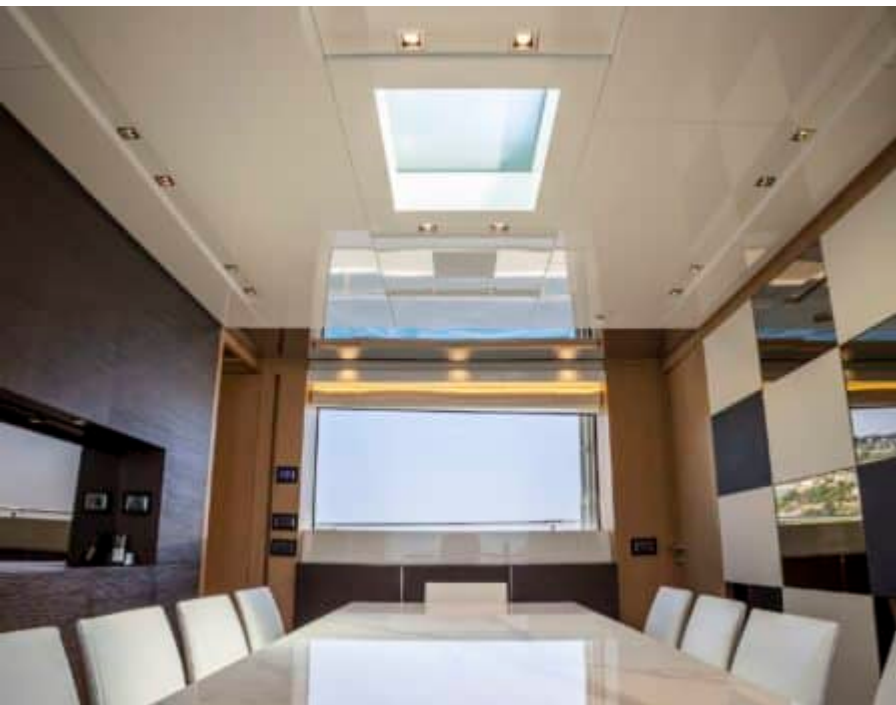
# INTERIOR DESIGN



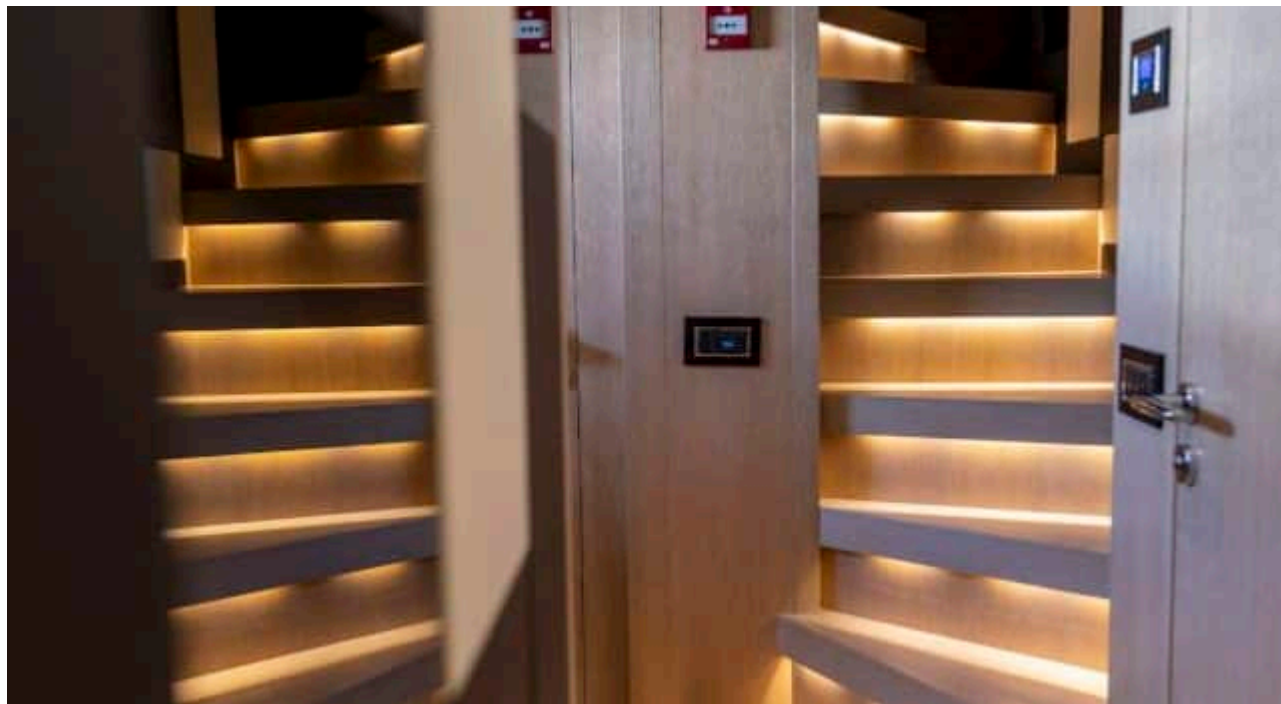




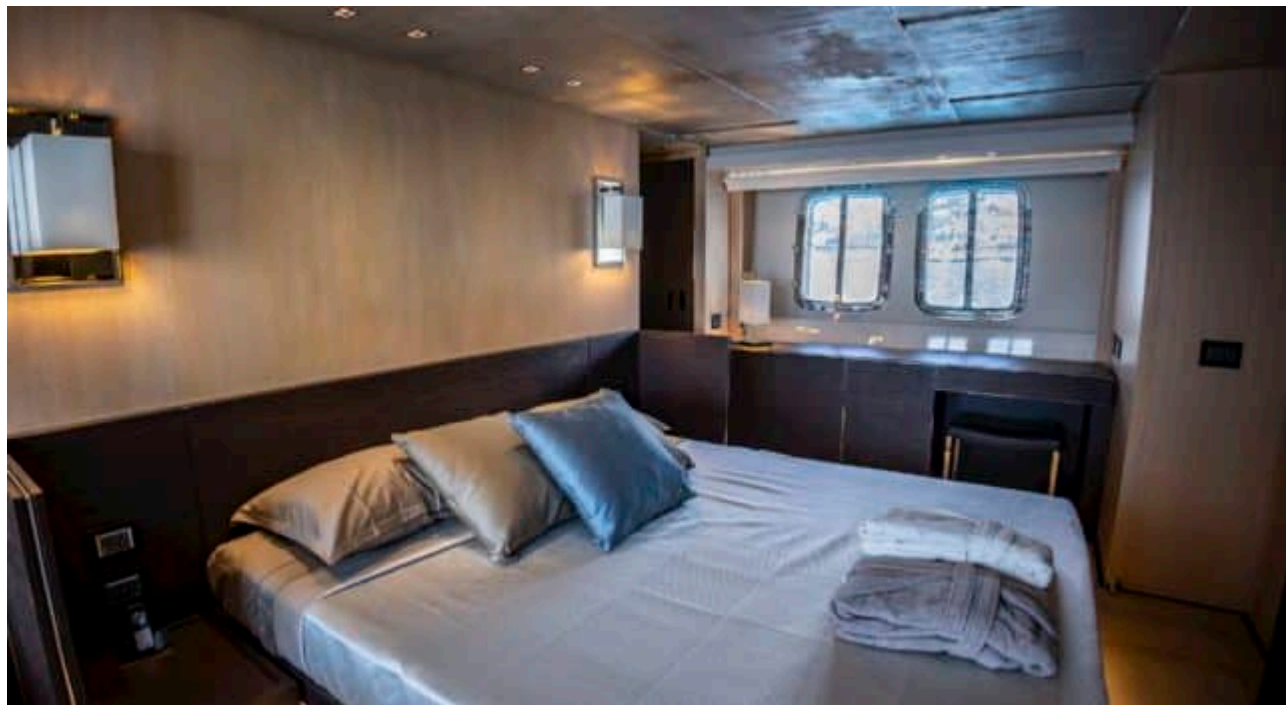




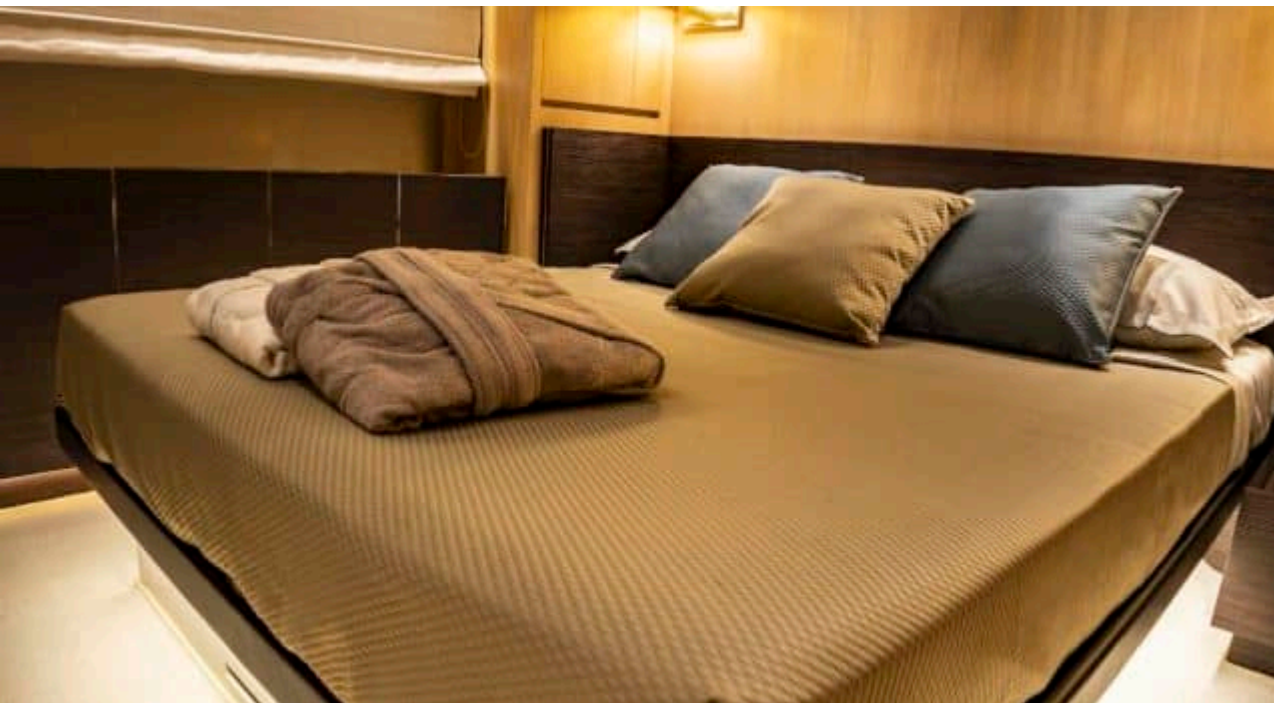
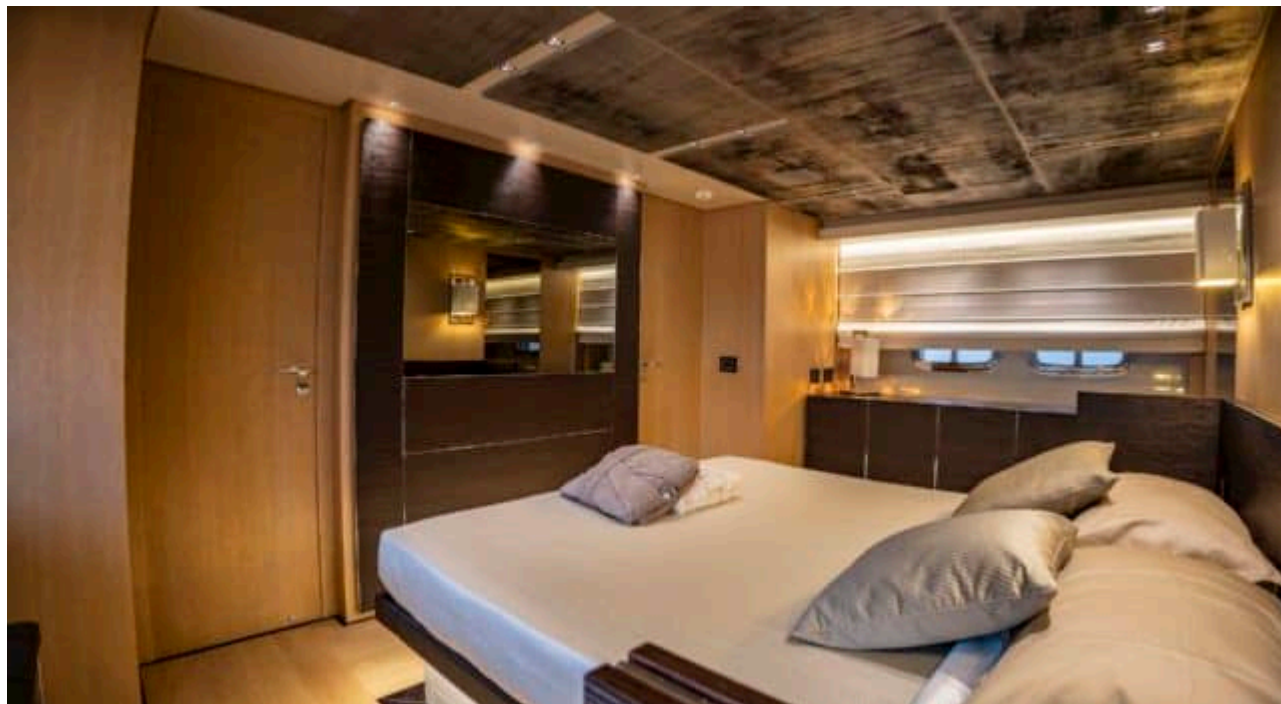




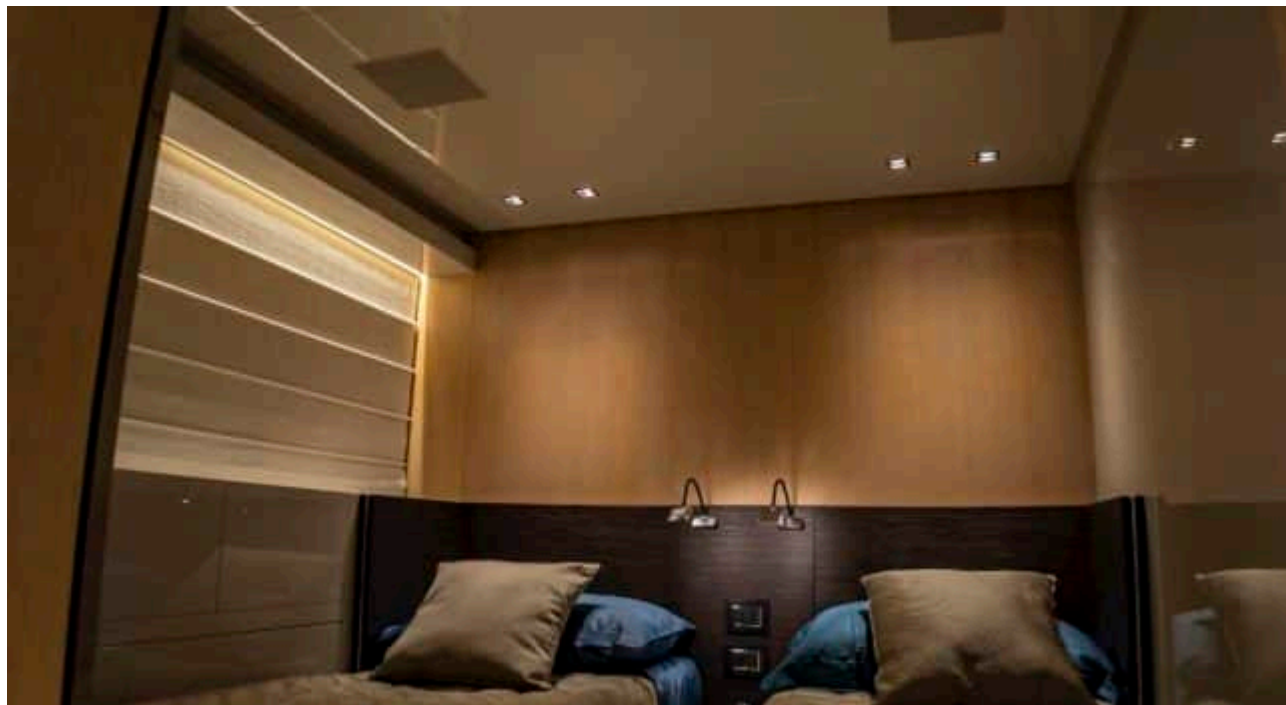


















# GALLERY LIFESTYLE









# Specifications



Summer low rate per week

65 000 €



Summer high rate per week

70 000 €



Winter low rate per week

65 000 €



Winter high rate per week

70 000 €



Builder

Sanlorenzo



Year built

2016



Year refit

2023



Length

29.10 m



Guests Cruising

12



Cabins

4

Winter Cruising Area(s)

Corsica - Sardinia, Italy & Sicily

Summer Cruising Area(s)

Corsica - Sardinia, Italy & Sicily

Crew

4

Max speed

28 knots

Cruising speed

21.99 knots

Fuel consumption

500 L/H

Type of cabins

4 (2 x Double , 1 x Triple , 1 x Twin )