











M/Y MISCHIEF

-  Air Conditioning
-  Inflatable sailboat
-  Kayaking
-  Paddle Boards x 2
-  Snorkeling Gear
-  Wifi
-  Windsurf
-  Scuba diving



EXTERIOR DESIGN









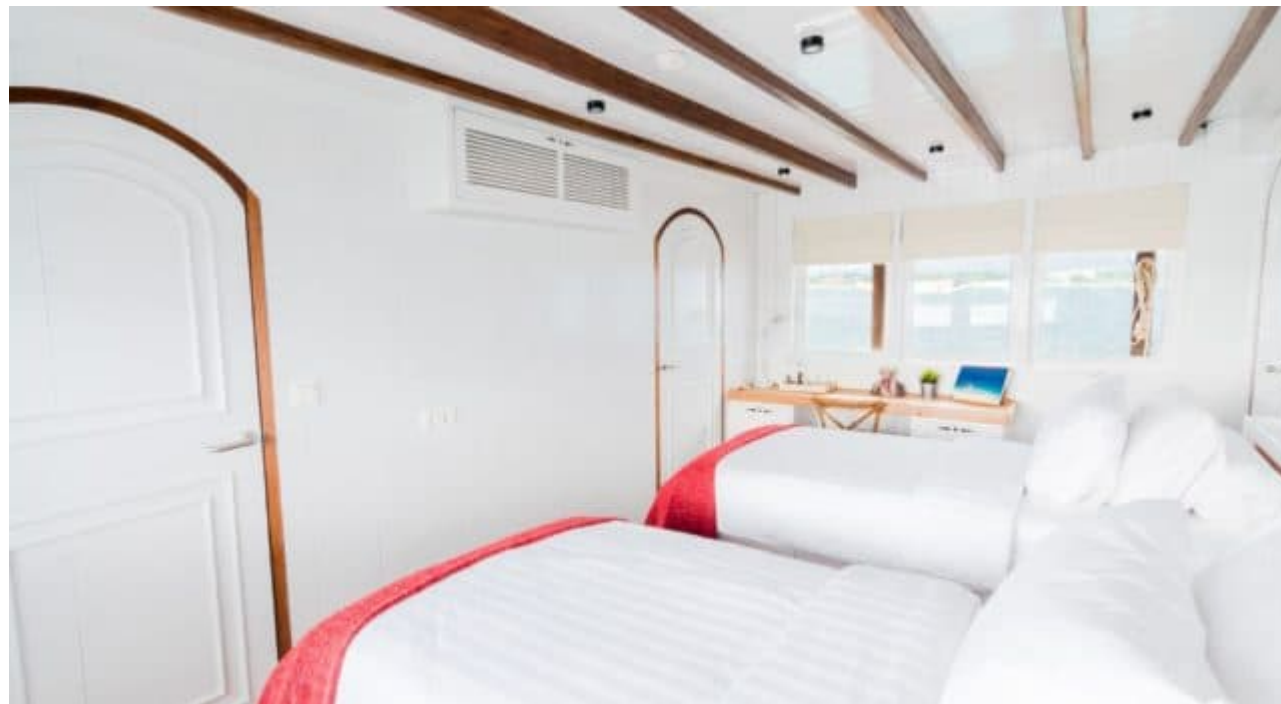
INTERIOR DESIGN











GALLERY LIFESTYLE







Specifications



Low rate per day

8 500 €



High rate per day

9 500 €



Summer low rate per week

\$ 59 500



Summer high rate per week

\$ 59 500



Winter low rate per week

\$ 66 500



Winter high rate per week

\$ 66 500



Builder

Pak Haji Wahab



Year built

2015



Length

30 m



Guests Cruising

8



Cabins

4

Winter Cruising Area(s)

Indian Ocean & South East Asia

Summer Cruising Area(s)

Indian Ocean & South East Asia

Crew

8

Max speed

12 knots

Cruising speed

8 knots

Fuel consumption

50 Litres/Hr

Type of cabins

4 (2 x Double, 2 x Twin)