



M/Y EXTRA TIME



Length
44.27m 145.24 ft.



Guests
10




















Cabins
5



Crew
9

M/Y EXTRA TIME

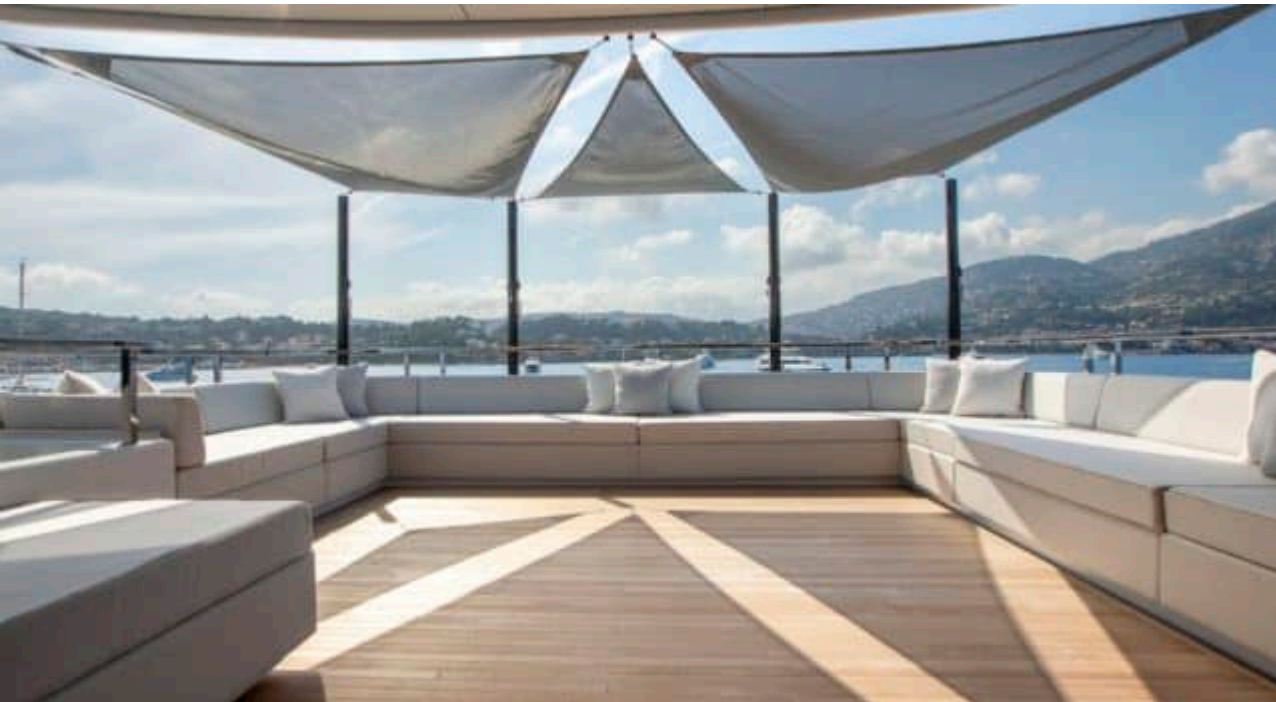
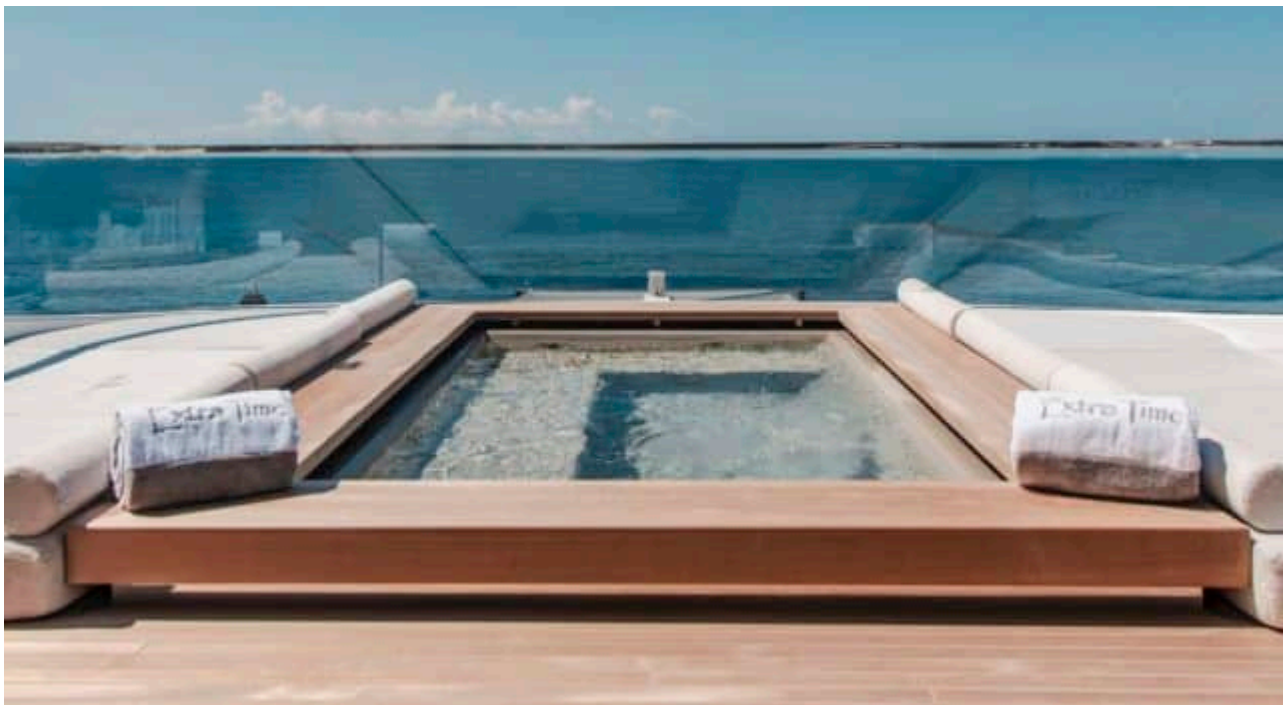
- | | | | | |
|--|---|---|---|---|
| 
Air Conditioning | 
Apple TV | 
E-Foil | 
Electric bicycle | 
Jacuzzi |
| 
Jetski x 2 | 
Jetsurf | 
Seabob x 3 | 
Snorkeling Gear | 
Sound System |
| 
Stabilisers at anchor | 
Stabilisers underway | 
Surf Board | 
Television | 
Tender |
| 
Wifi | 
Windsurf | | | |



EXTERIOR DESIGN



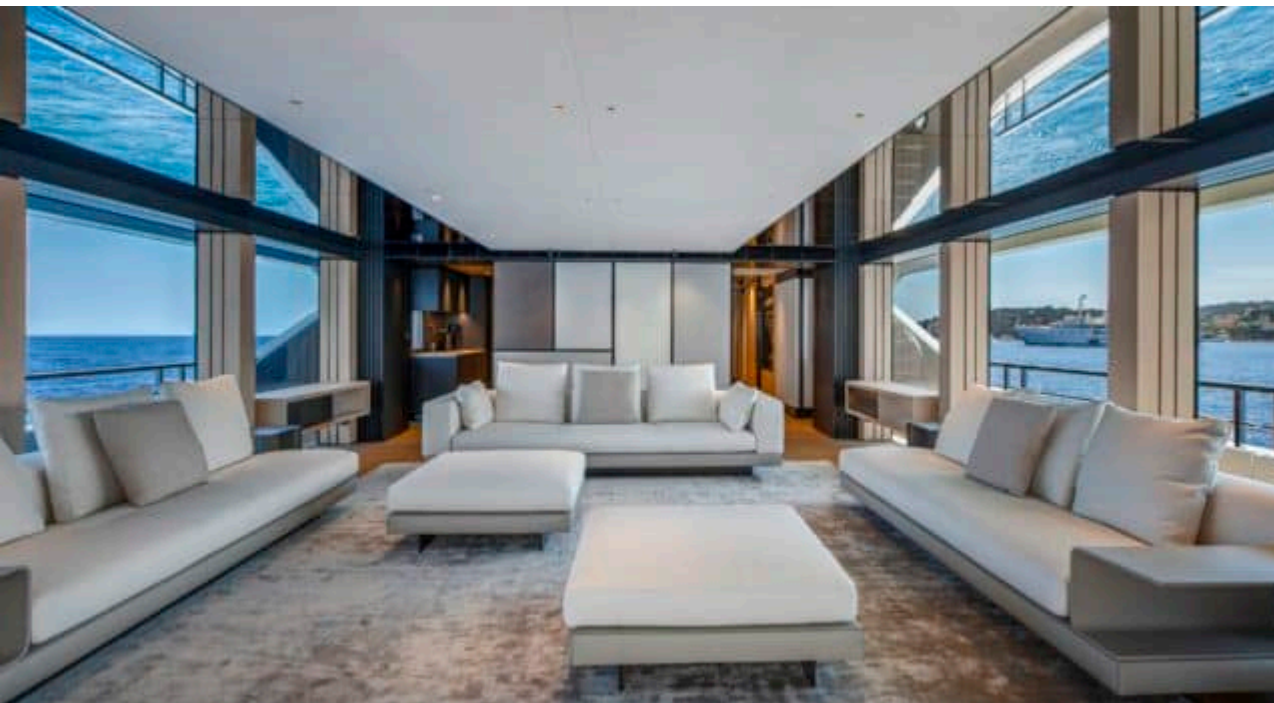
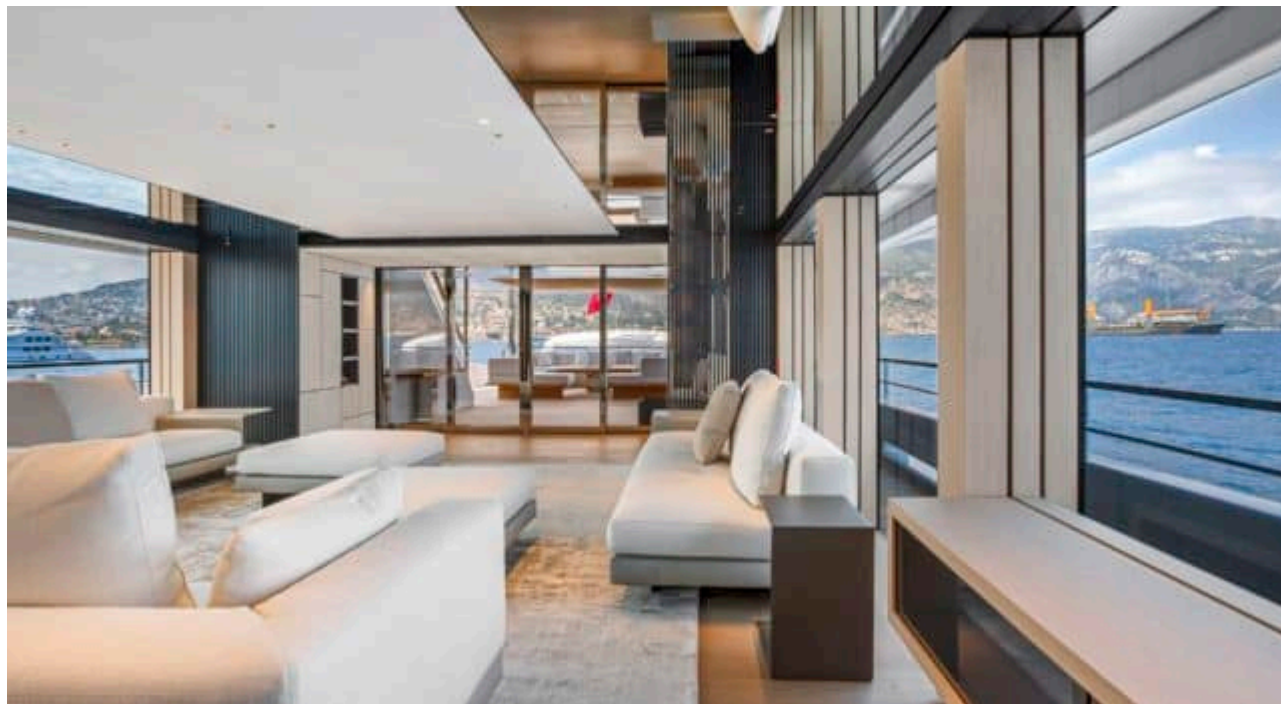


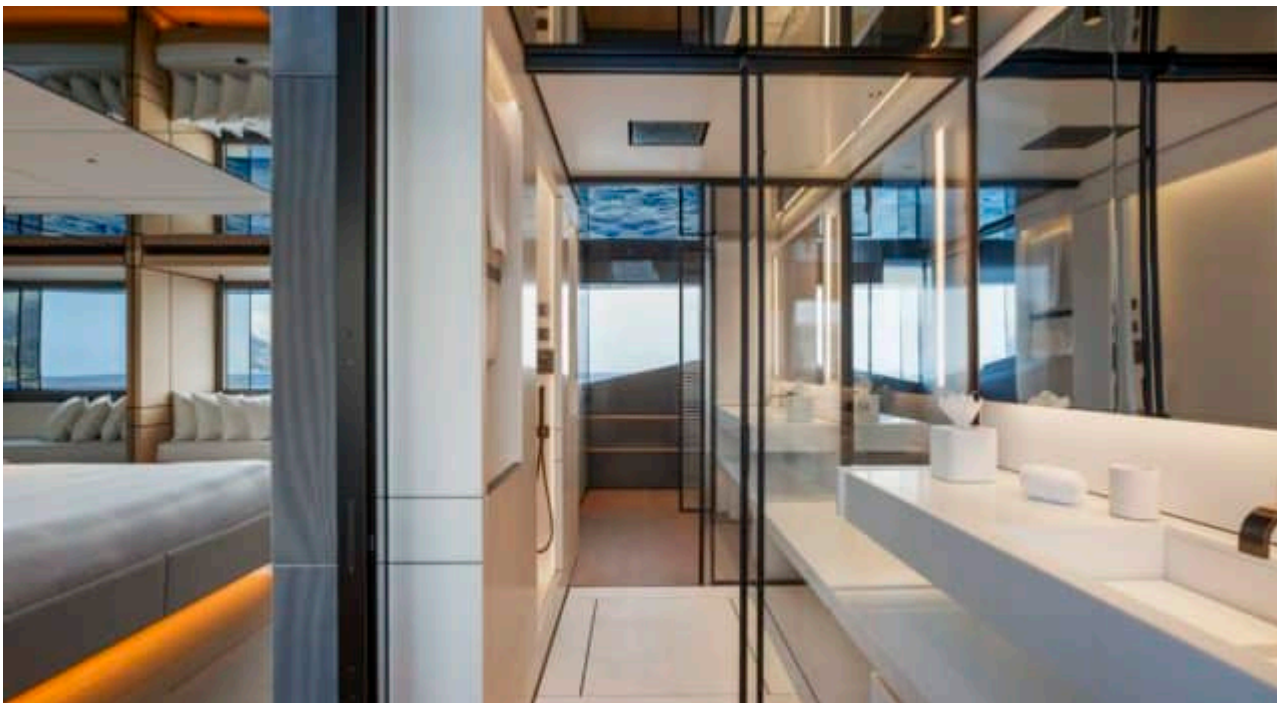


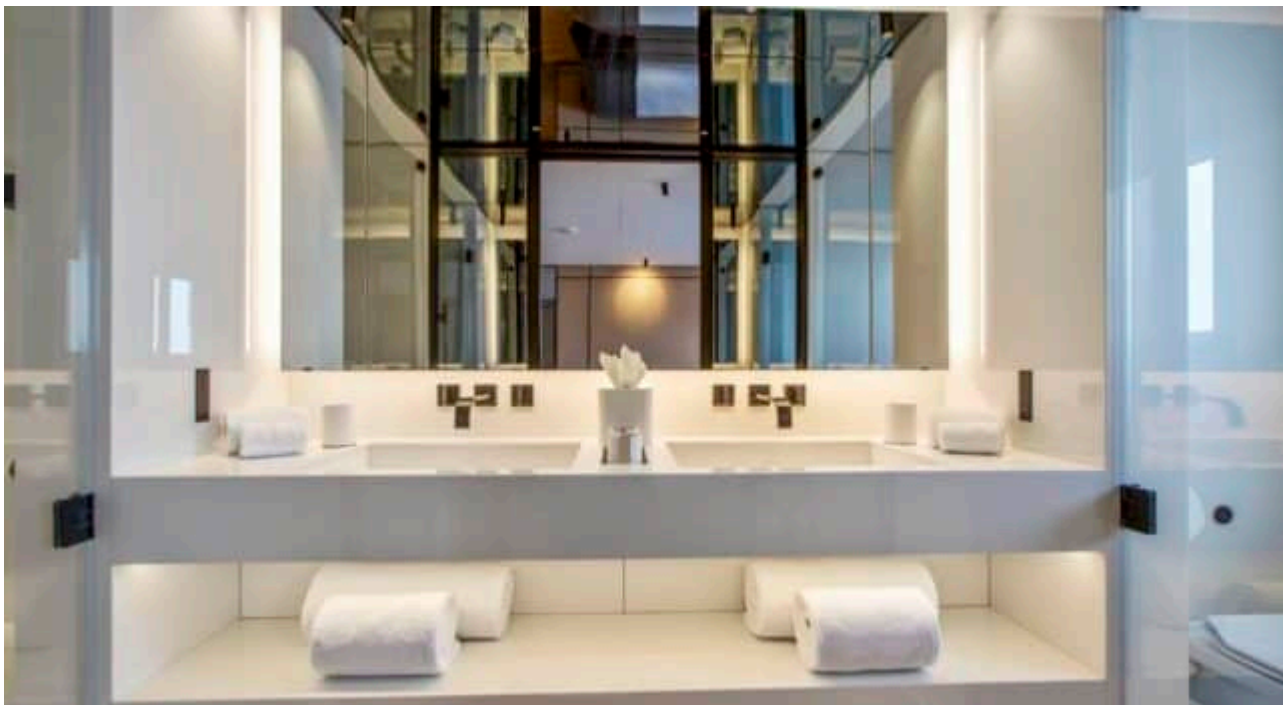


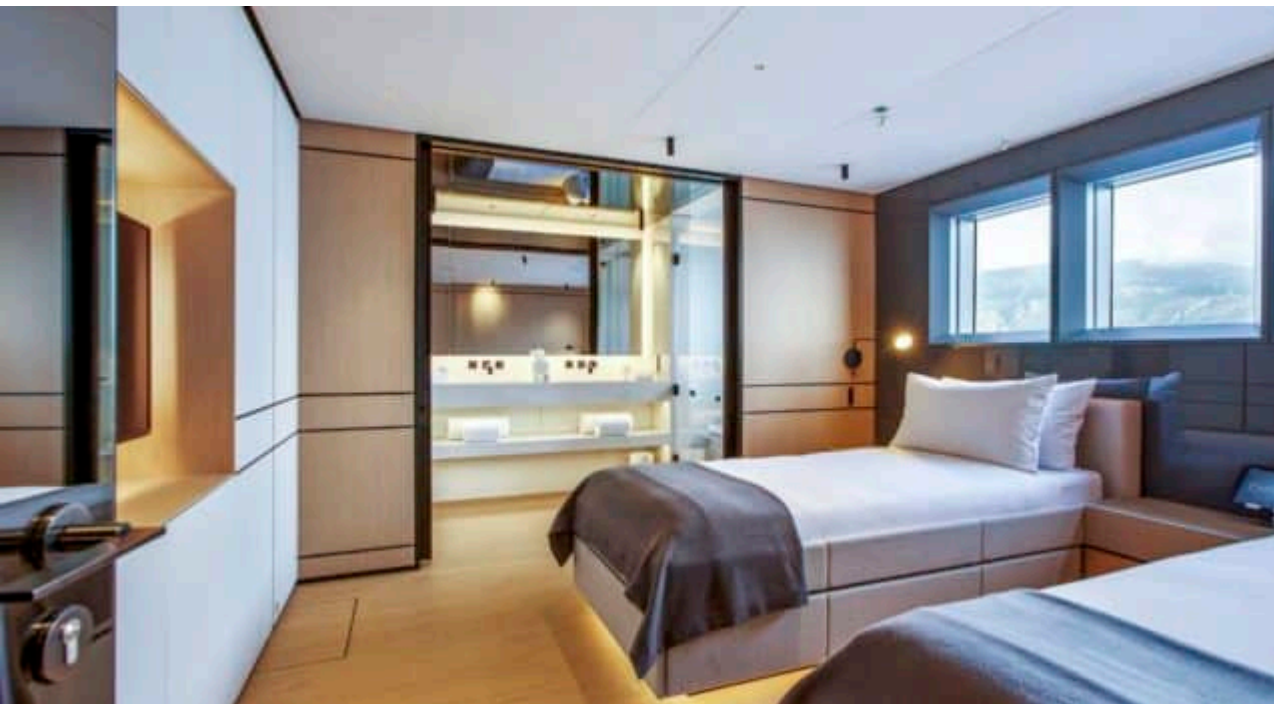
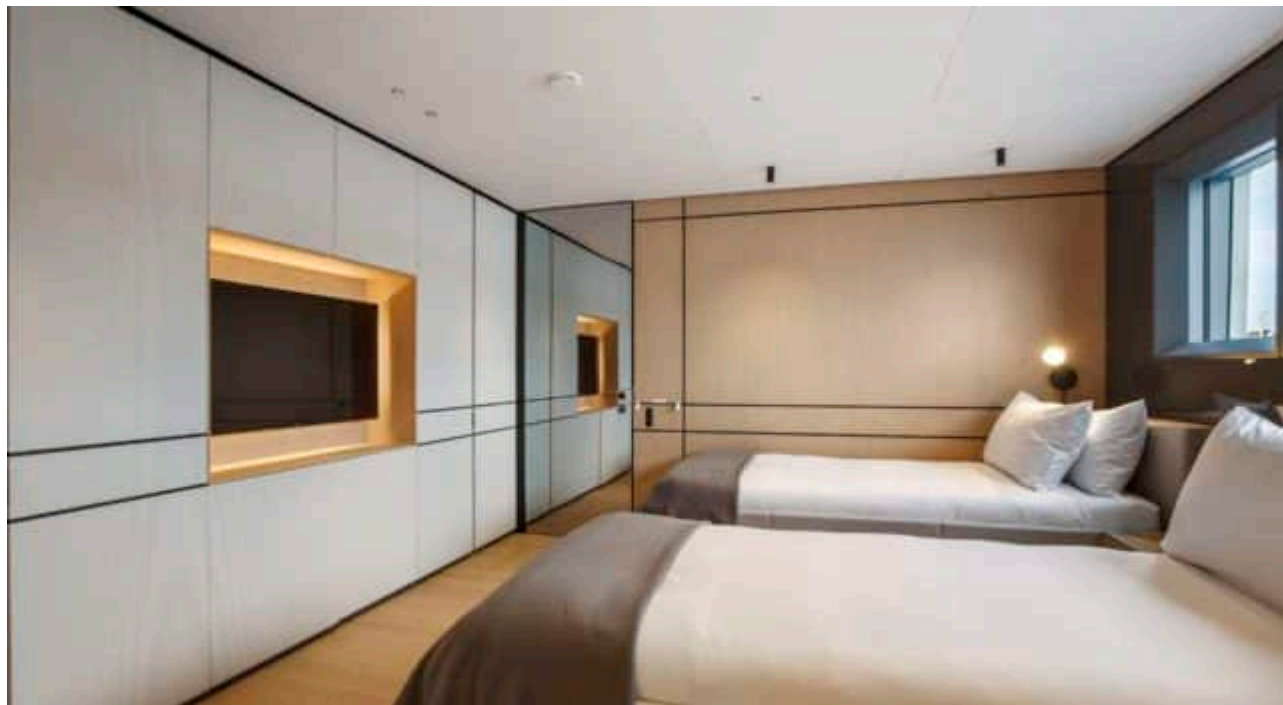
INTERIOR DESIGN





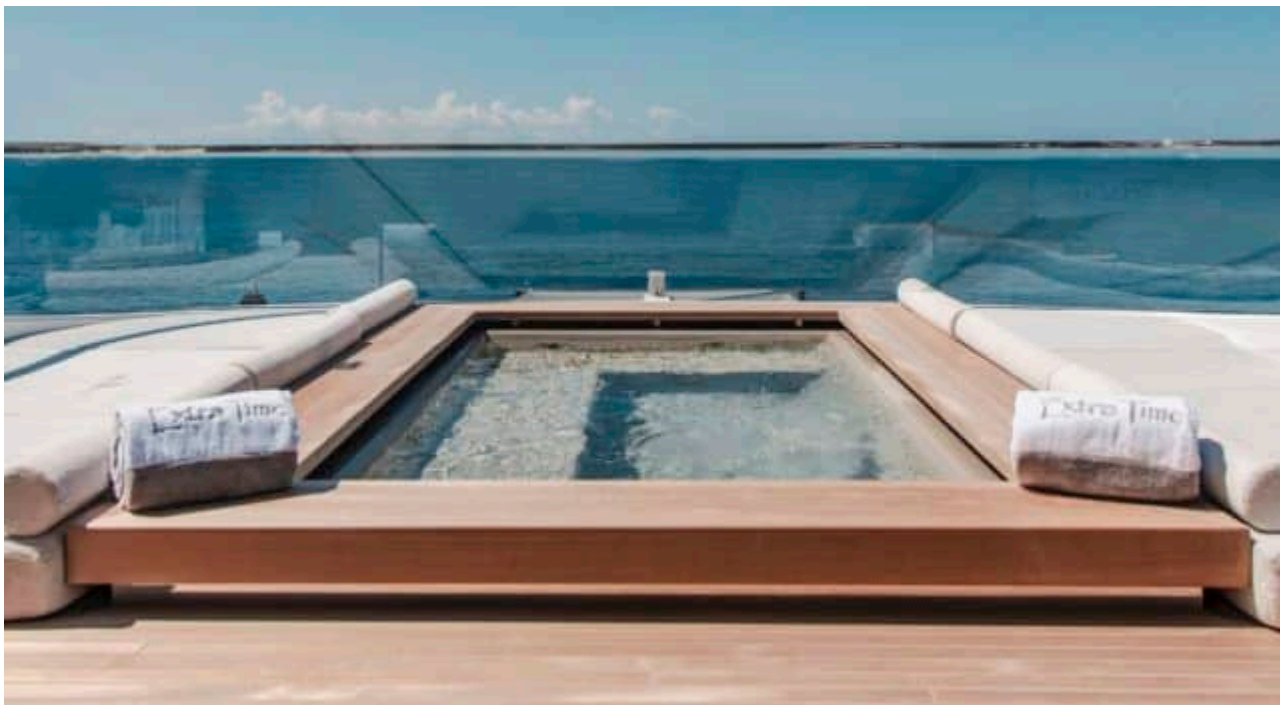


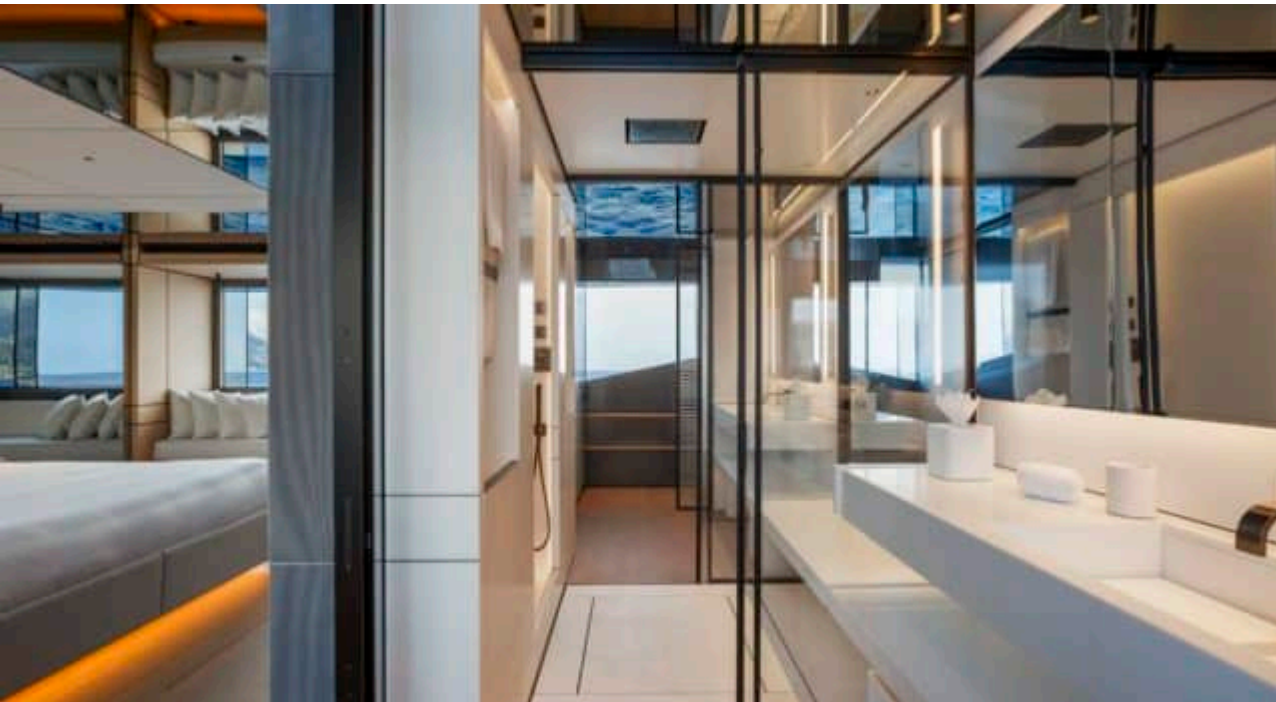




GALLERY LIFESTYLE









Specifications



Summer low rate per week

240 000 €



Summer high rate per week

285 000 €



Winter low rate per week

240 000 €



Winter high rate per week

285 000 €



Builder

Conrad



Year built

2024



Length

44.27 m



Guests Cruising

10



Cabins

5

Winter Cruising Area(s)

Summer Cruising Area(s)

Corsica - Sardinia, French Riviera, Italy & Sicily, Spain & Balearics, West Mediterranean

Crew

9

Max speed

12 knots

Cruising speed

11 knots

Fuel consumption

120 L/H

Type of cabins

5 (3 x Double , 2 x Convertible)