



M/Y AMAN



Longue
ur
29.10m
95.47 ft.



Personn
es
12



Cabines
4



Equipag
e
4

M/Y AMAN

- | | | | | |
|---|--|---|--|---|
| 
Air Conditioning | 
Drone | 
Gym Equipment | 
Outdoor Cinema | 
Paddle Board |
| 
Seabob x 2 | 
Snorkeling Gear | 
Sound System | 
Stabilisers at anchor | 
Stabilisers underway |
| 
Television | 
Tender | 
Towable water toys | 
Wifi | 
Yoga mats |

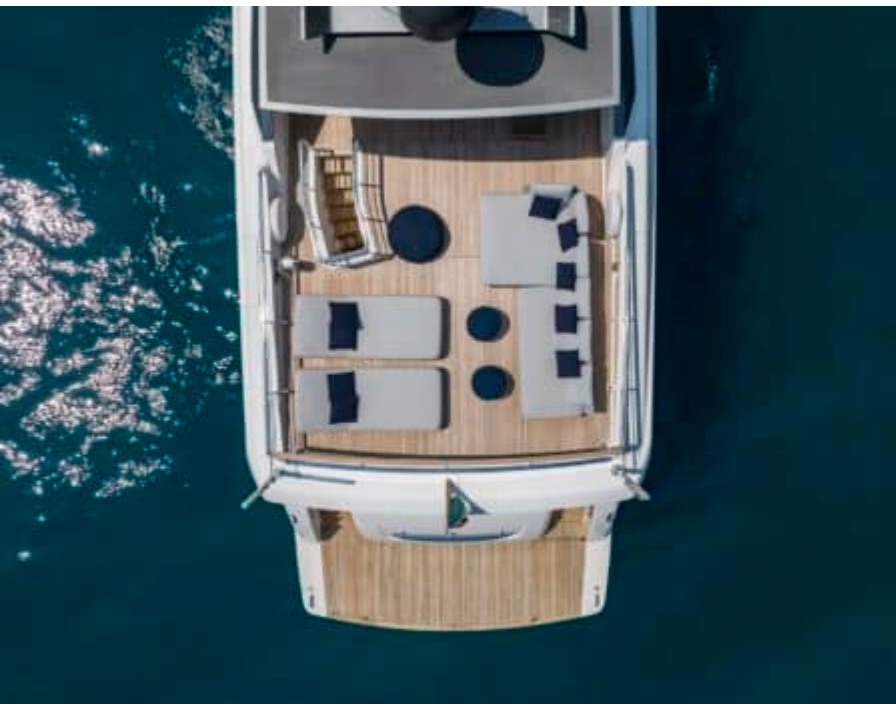


DESIGN D'EXTÉRIEUR



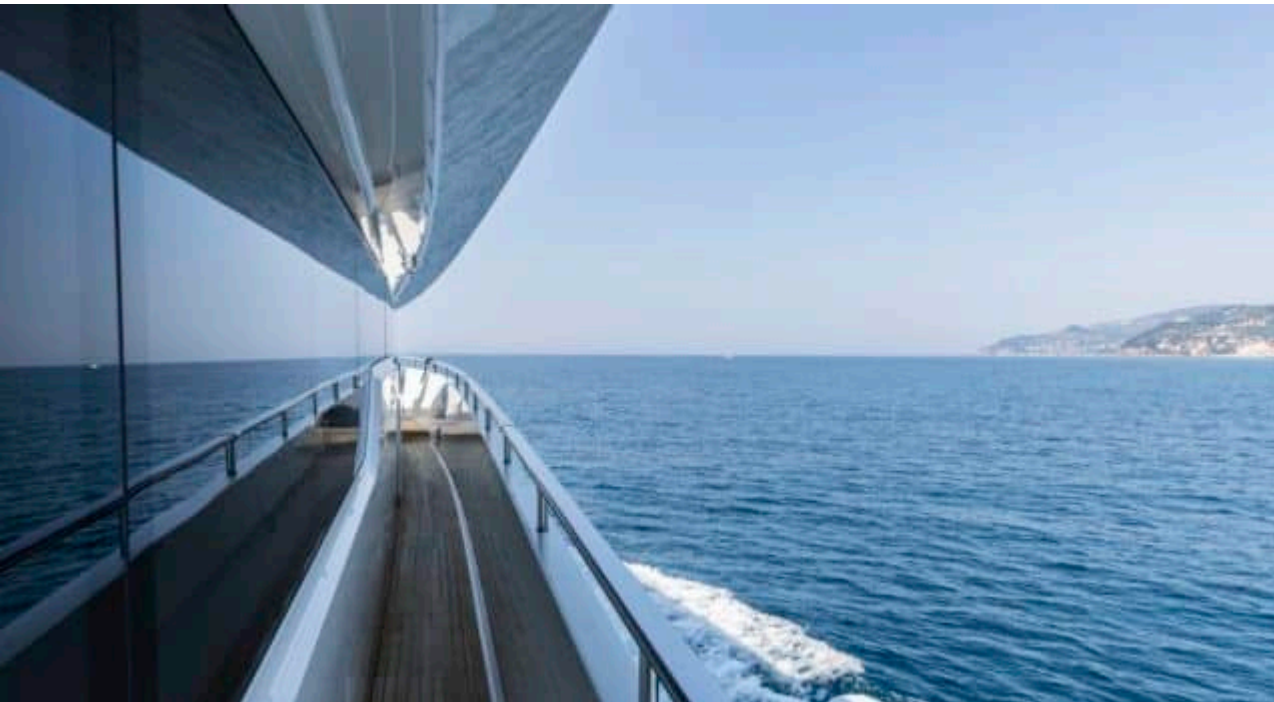
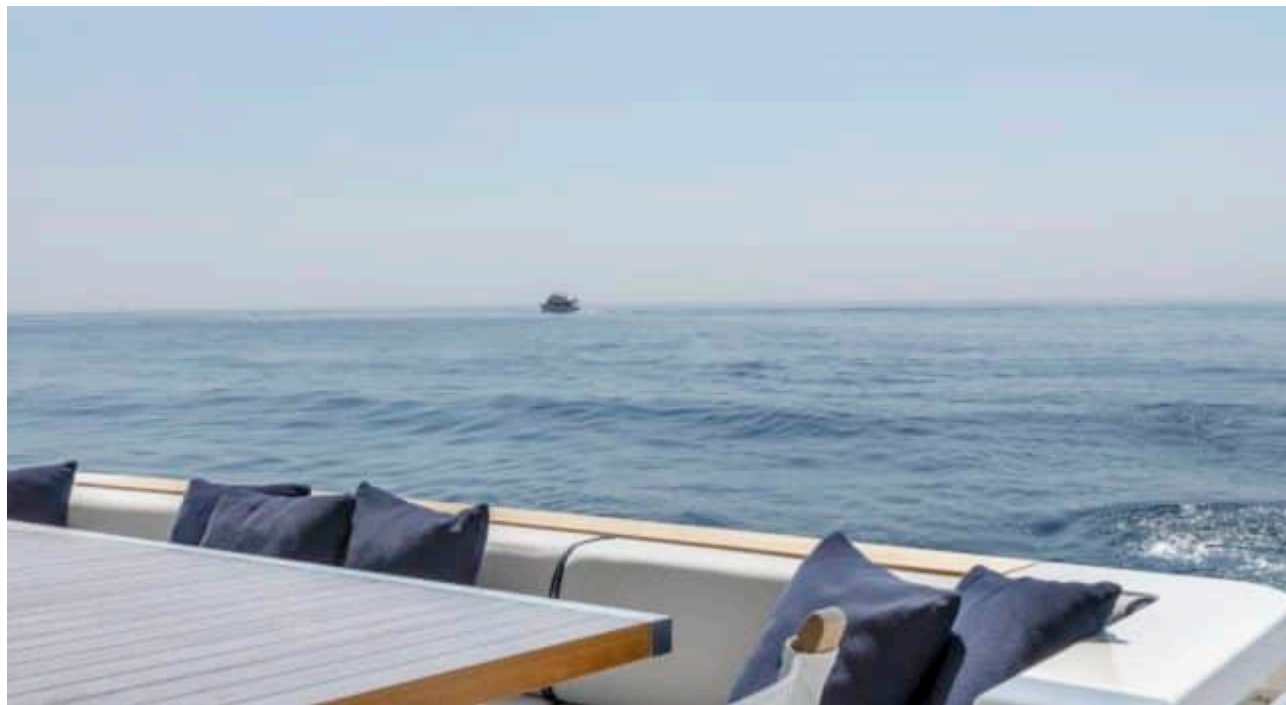






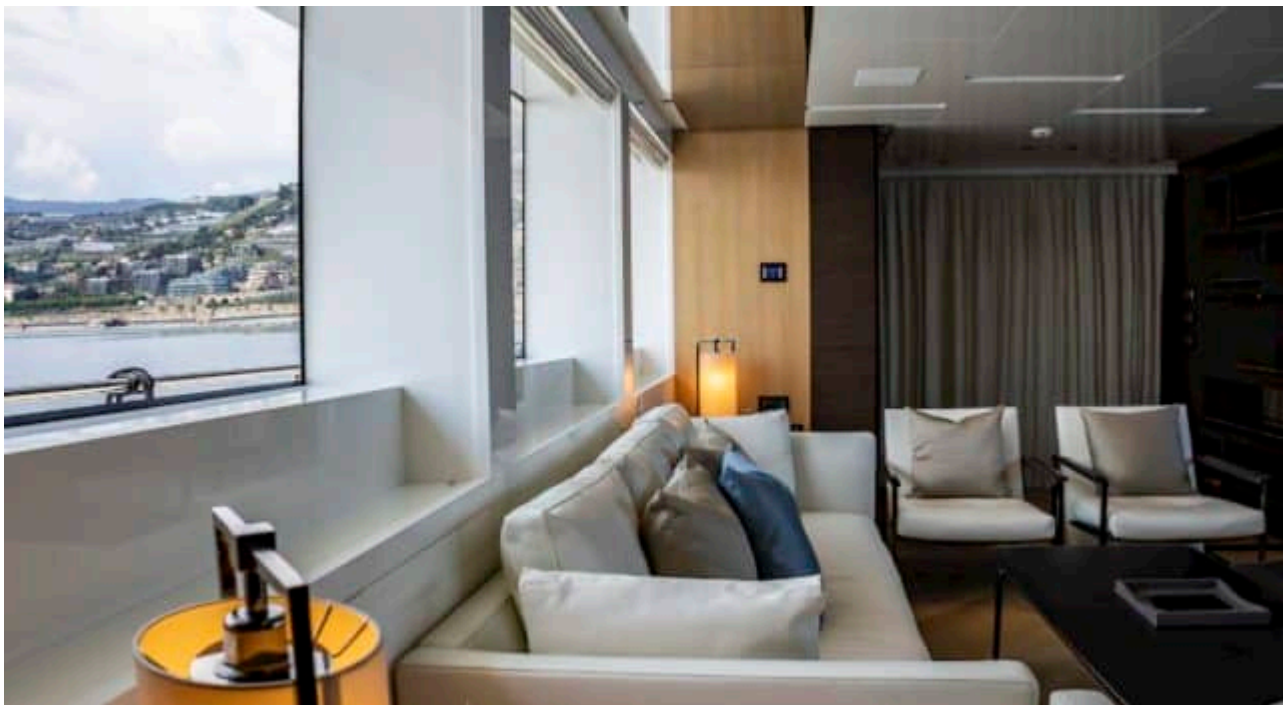


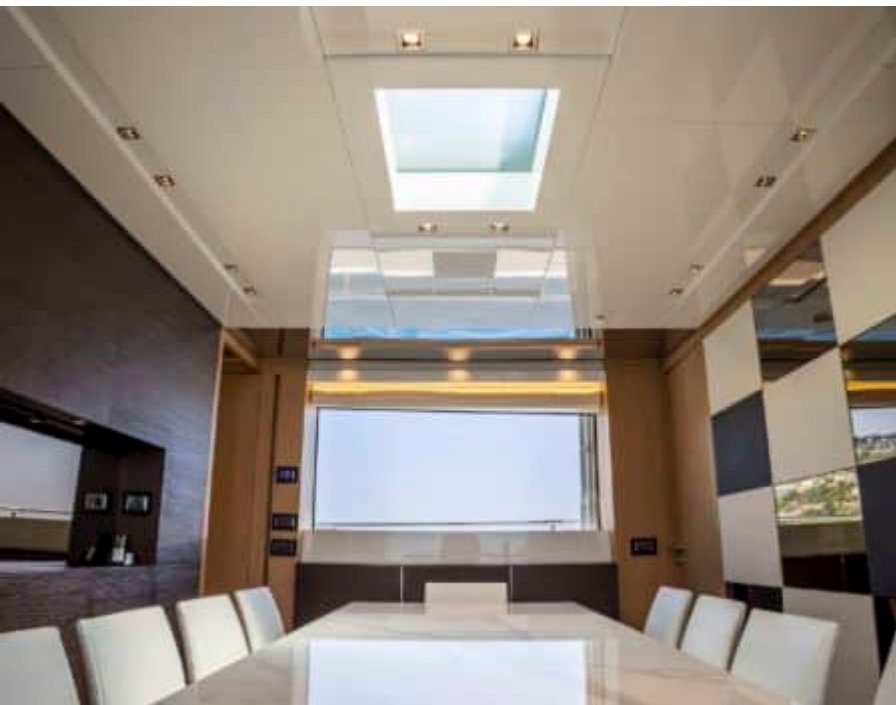




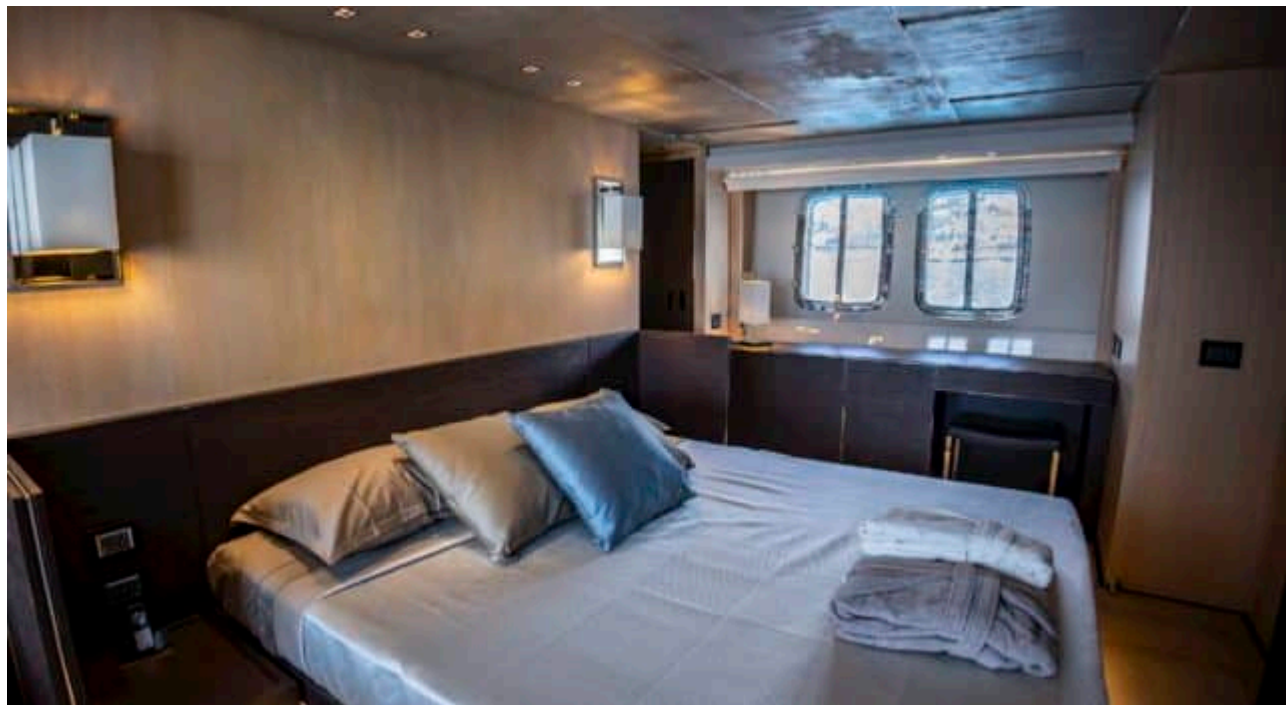
DESIGN D'INTÉRIEUR

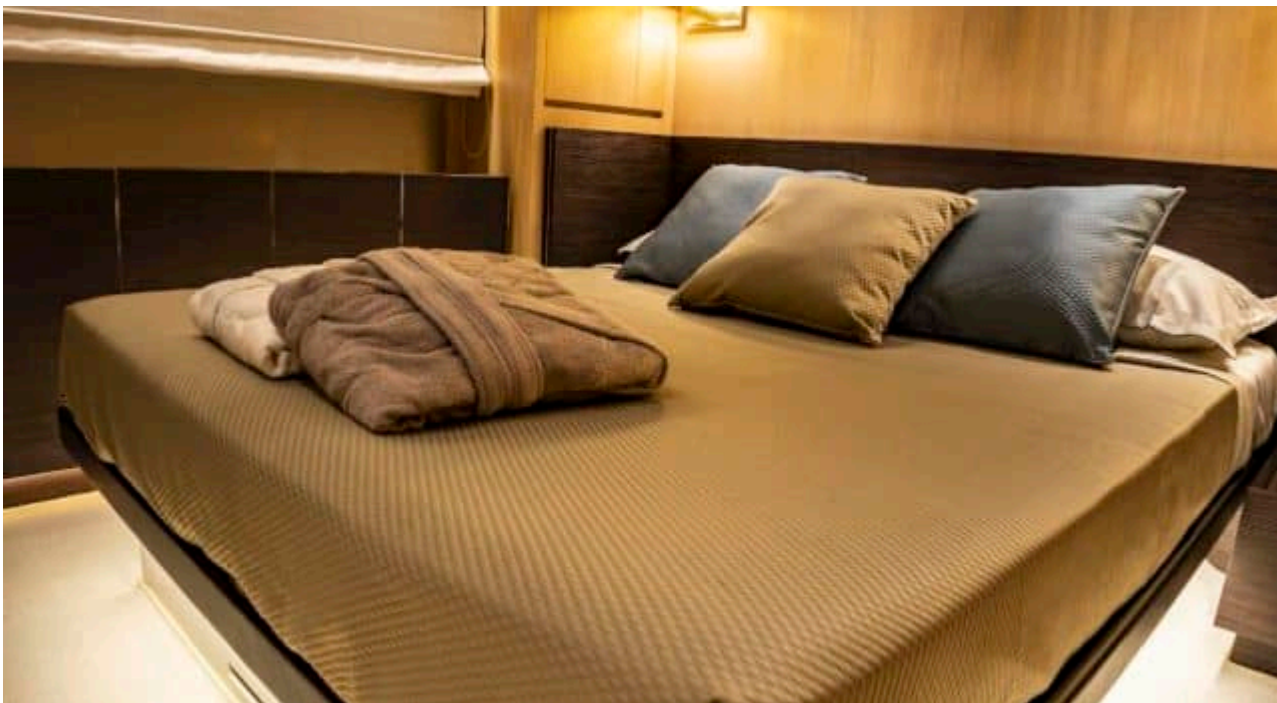
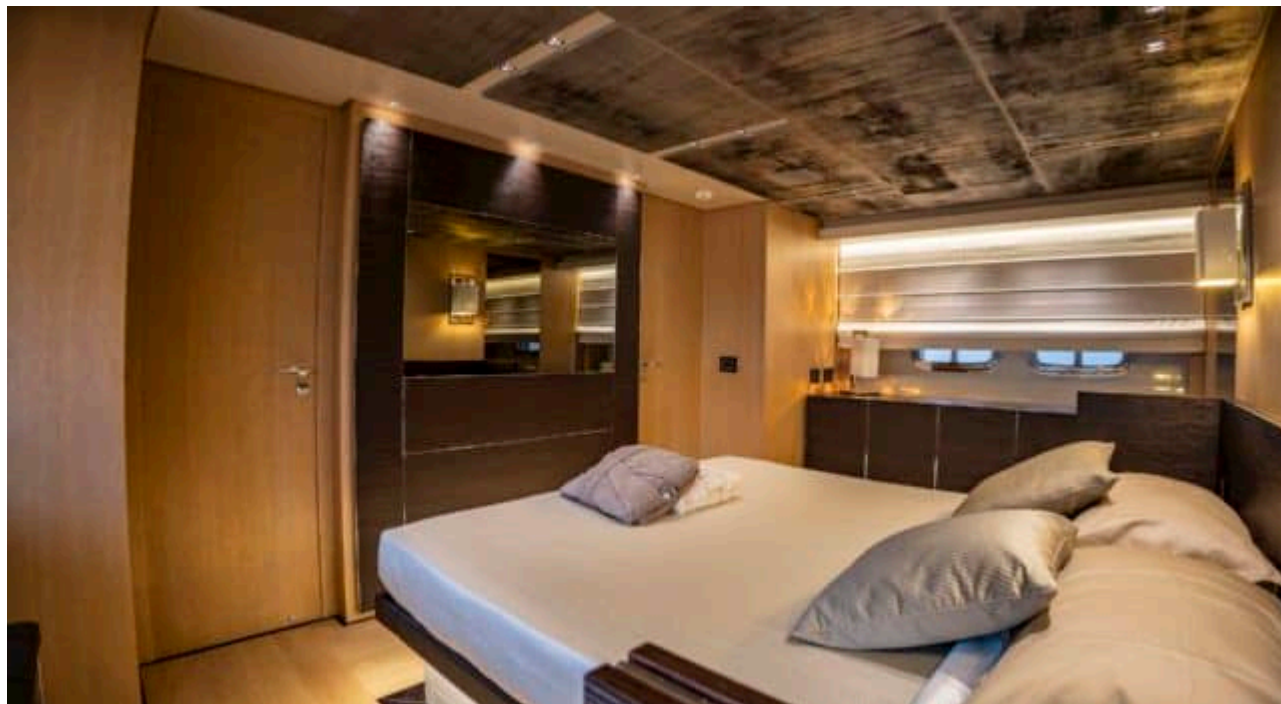


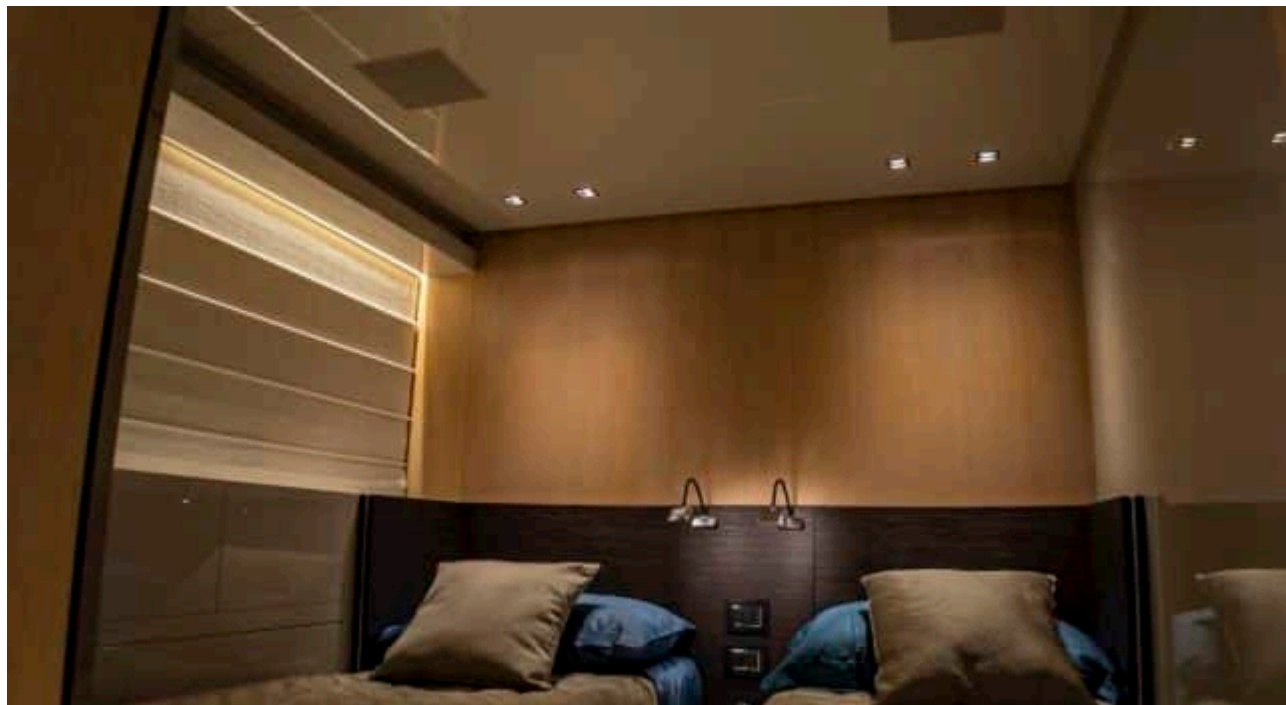














GALERIE MODE DE VIE





Spécifications



Prix basse saison été / semaine

65 000 €



Prix haute saison été / semaine

70 000 €



Prix basse saison hiver / semaine

65 000 €



Prix haute saison hiver / semaine

70 000 €



Constructeur

Sanlorenzo



Année de construction

2016



Année de refit

2023



Longueur

29.10 m



Navigation

12



Cabines

4

Zone(s) de Navigation hiver

Corsica - Sardinia, Italy & Sicily

Zone(s) de Navigation été

Corsica - Sardinia, Italy & Sicily

Equipage

4

Vitesse max

28 knots

Vitesse de croisière

21.99 knots

Consommation

500 L/H

Configuration cabines

4 (2 x Double , 1 x Triple , 1 x Twin)