

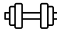


















M/Y ON TIME

- | | | | | |
|--|---|--|--|---|
| 
Air Conditioning | 
Beach set-up | 
Fishing Gear | 
Gym Equipment | 
Hydraulic platform |
| 
Jacuzzi | 
Jetski | 
Paddle Boards x 2 | 
Snorkeling Gear | 
Sound System |
| 
Stabilisers at anchor | 
Stabilisers underway | 
Television | 
Tender | 
Towable water toys |
| 
Wakeboard | 
Waterski | 
Yoga mats | | |



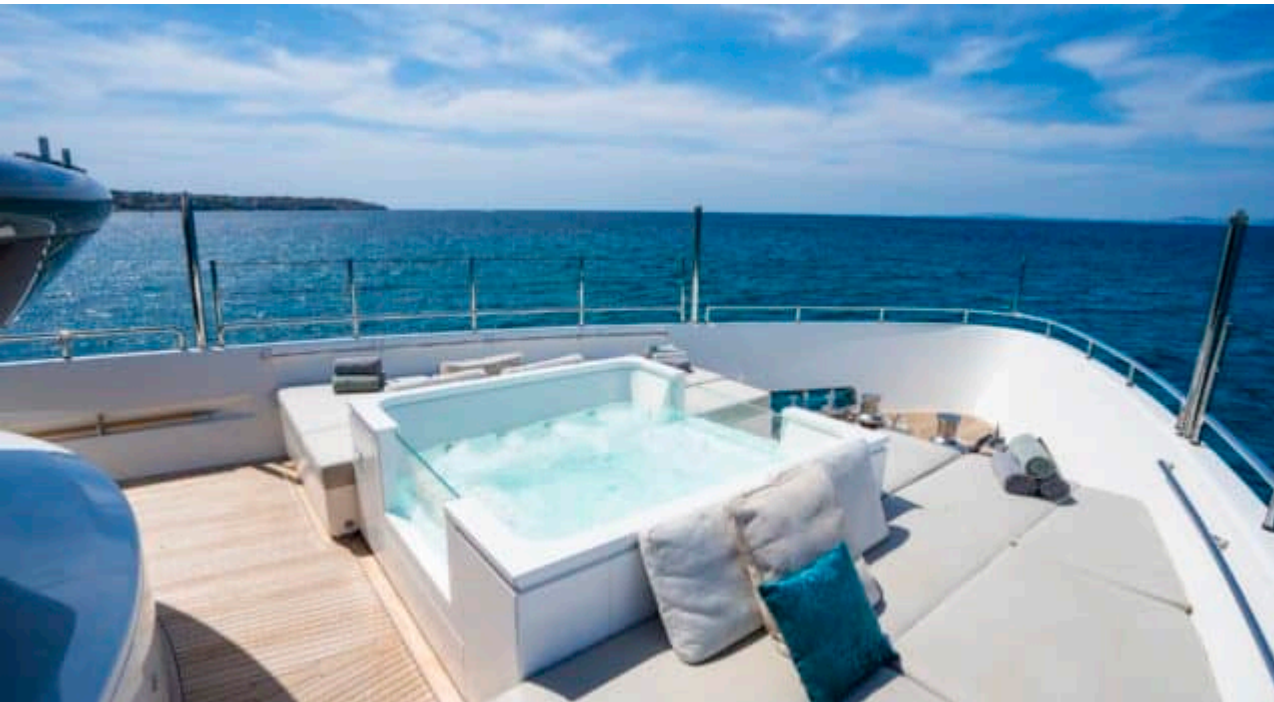
DESIGN D'EXTÉRIEUR





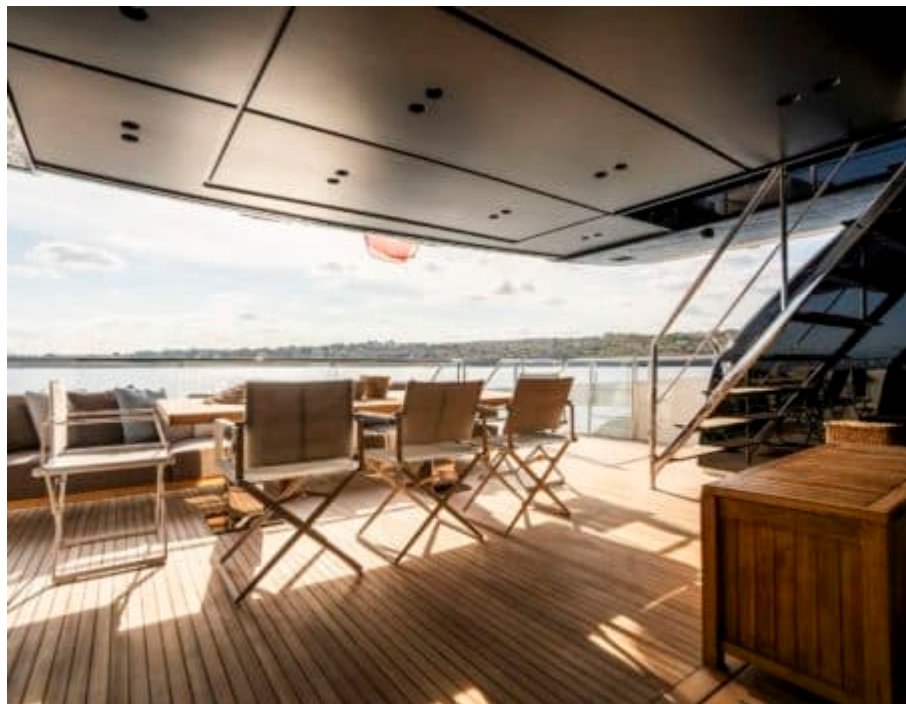
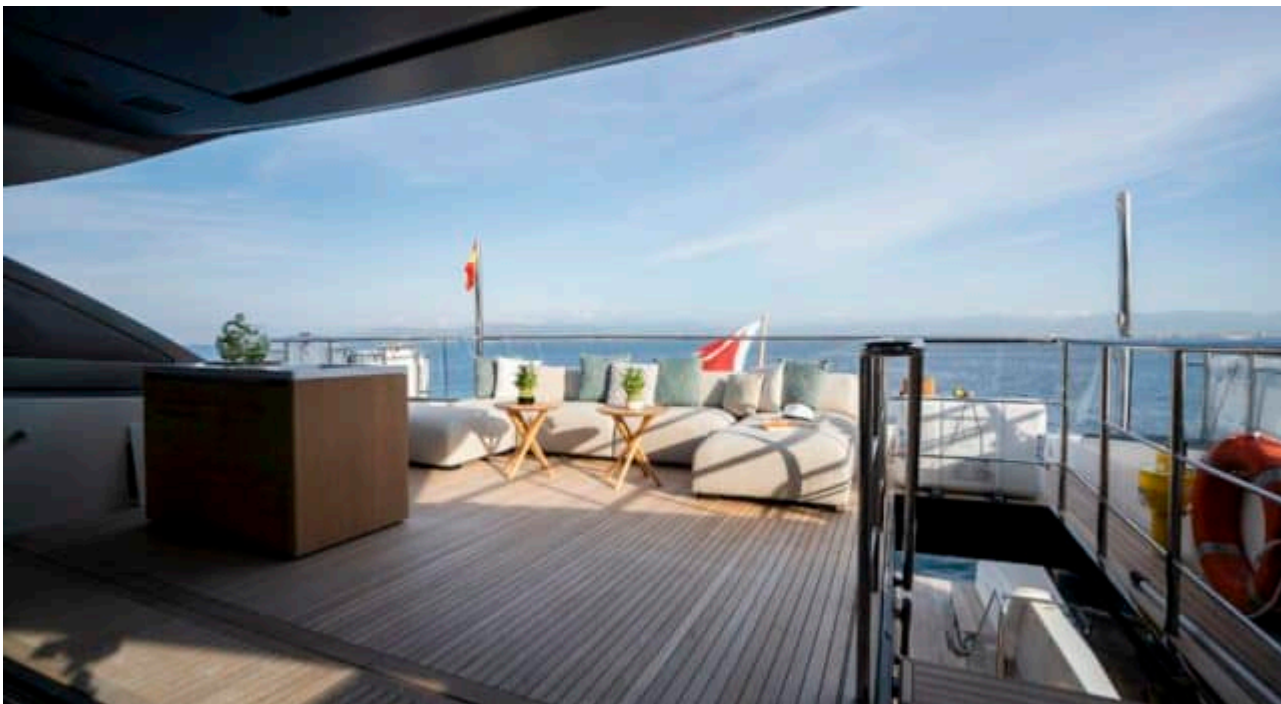










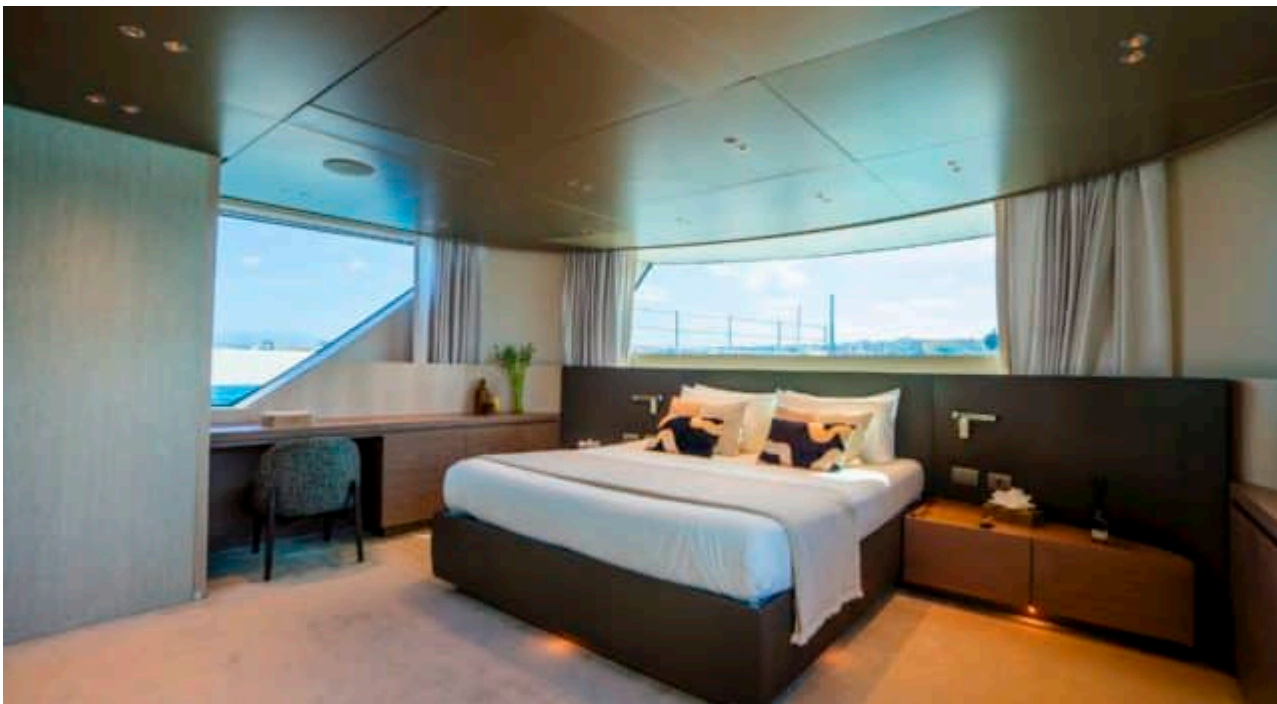
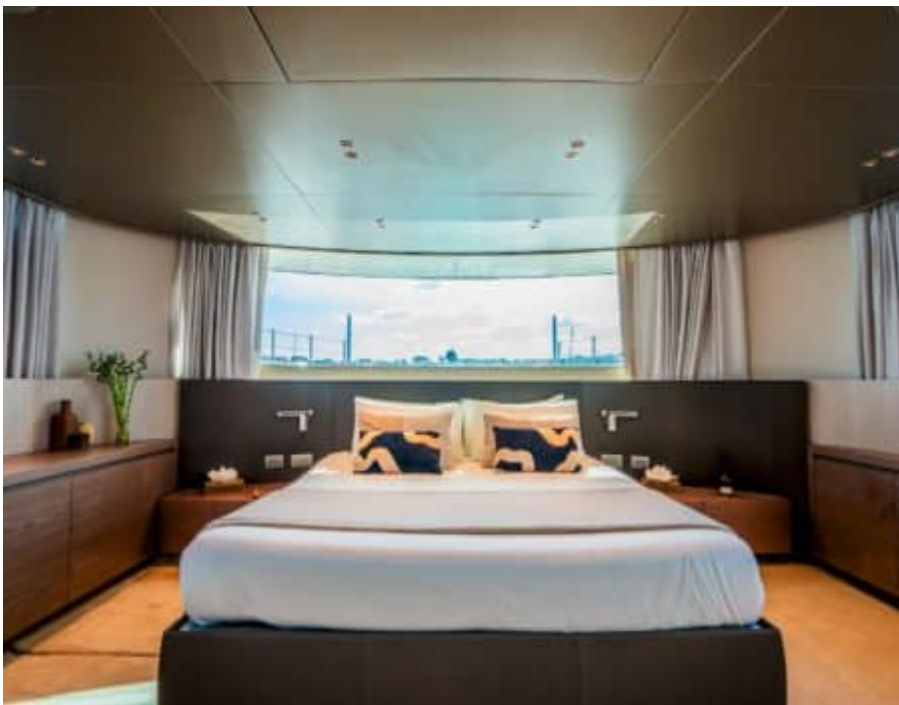


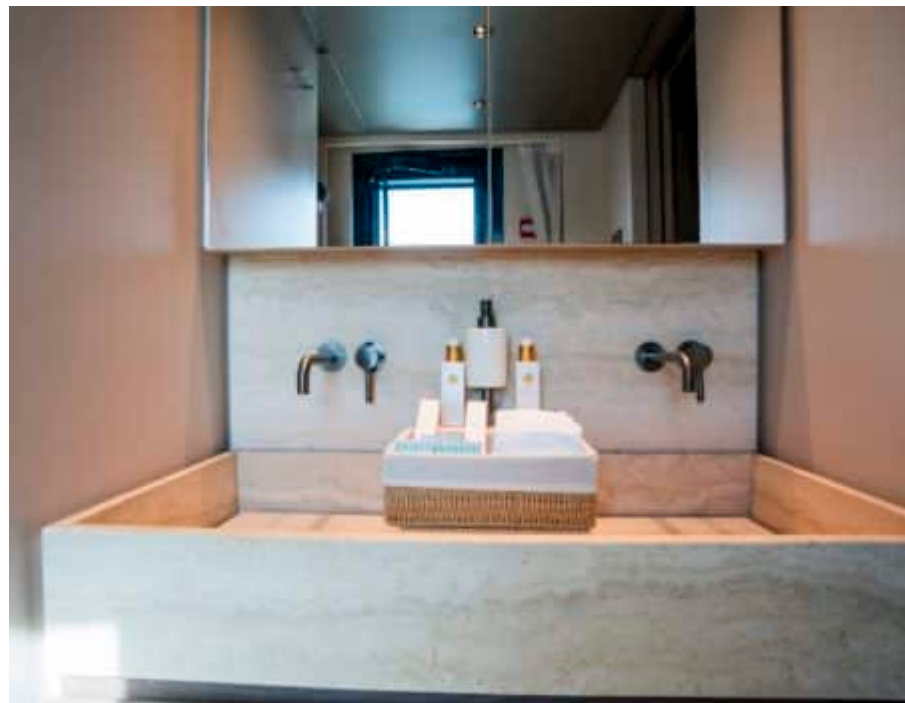
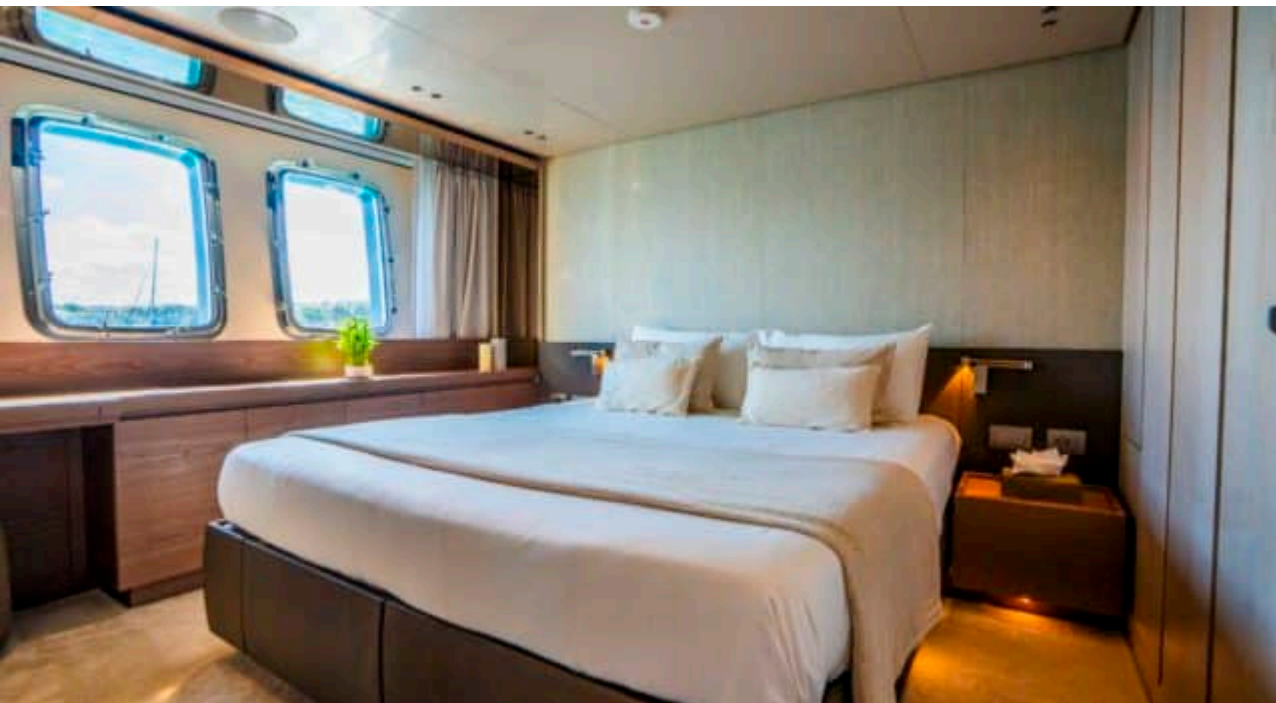
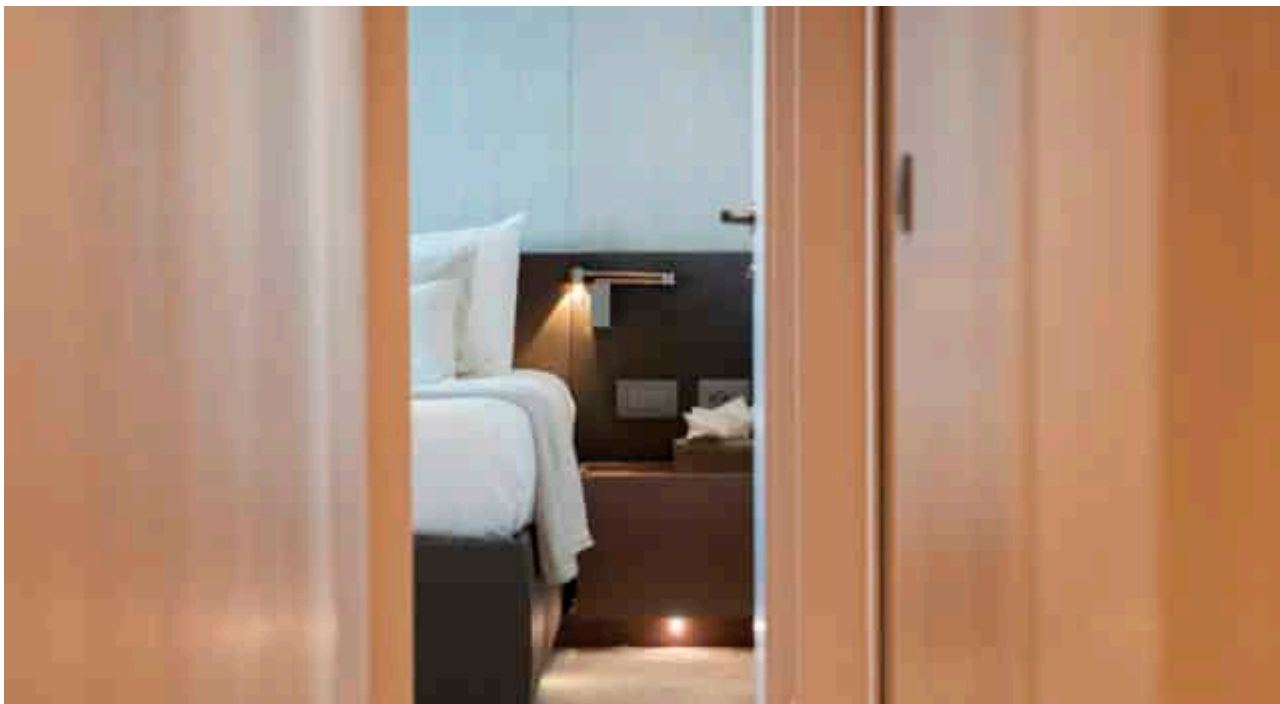


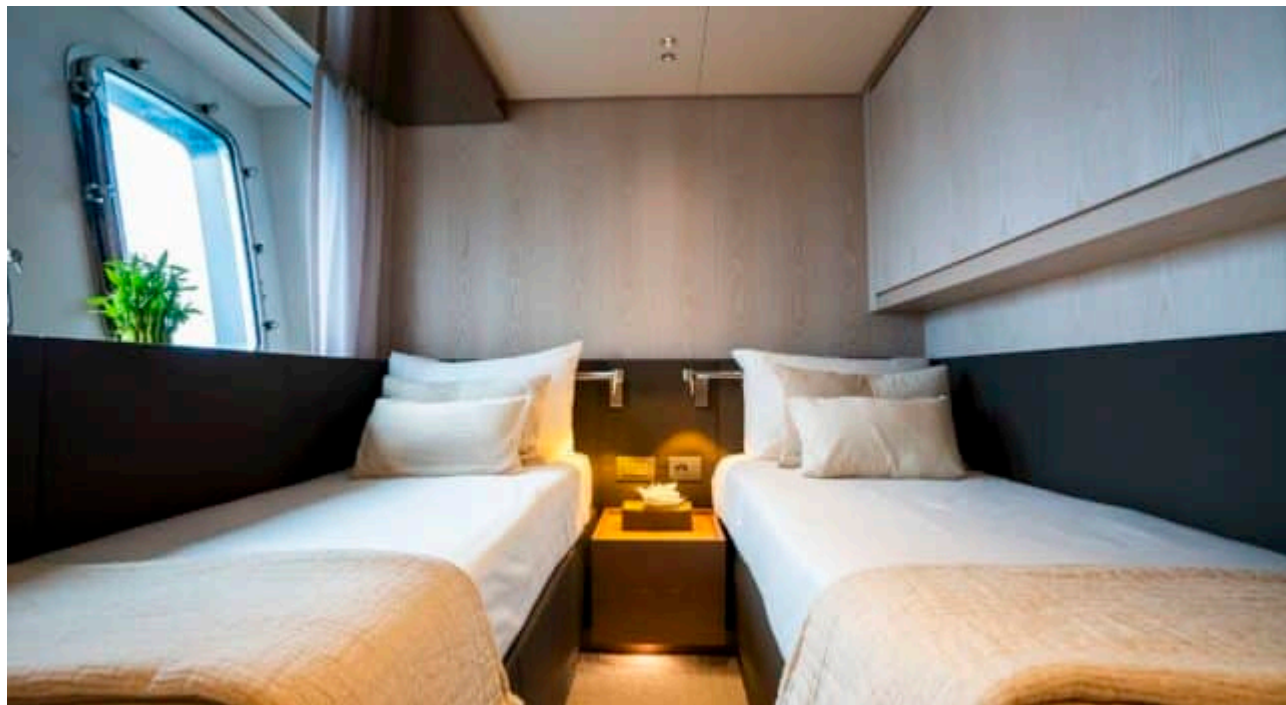
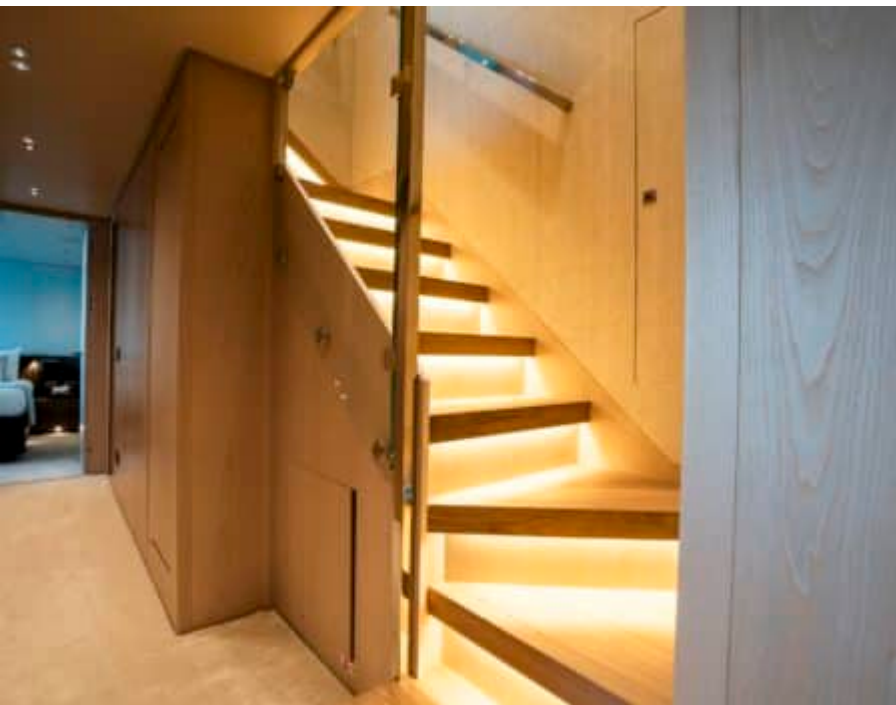
DESIGN D'INTÉRIEUR











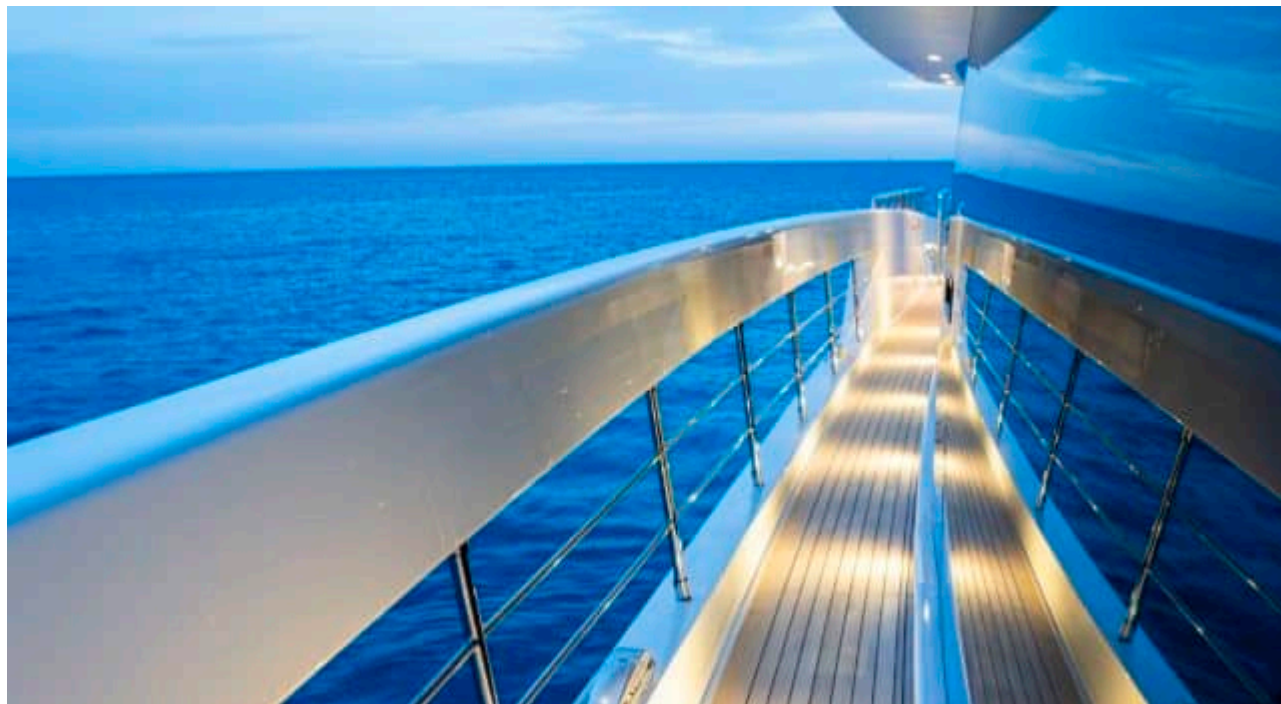


GALERIE MODE DE VIE







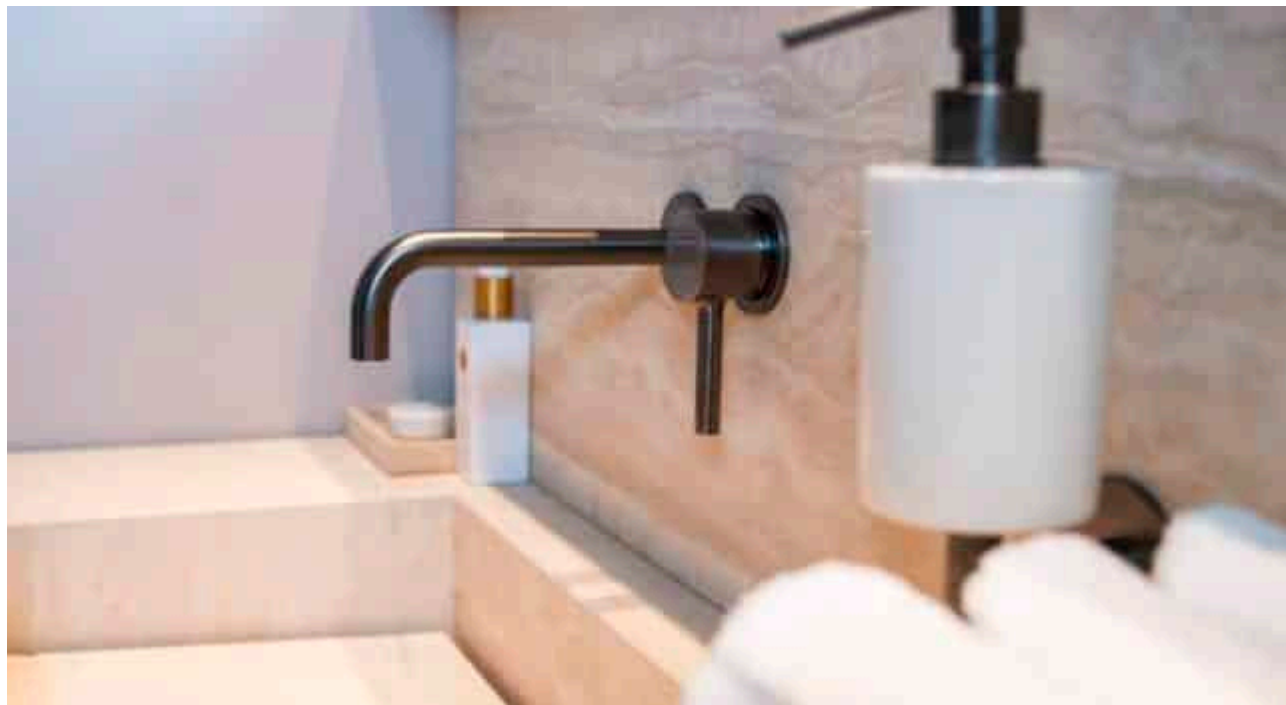
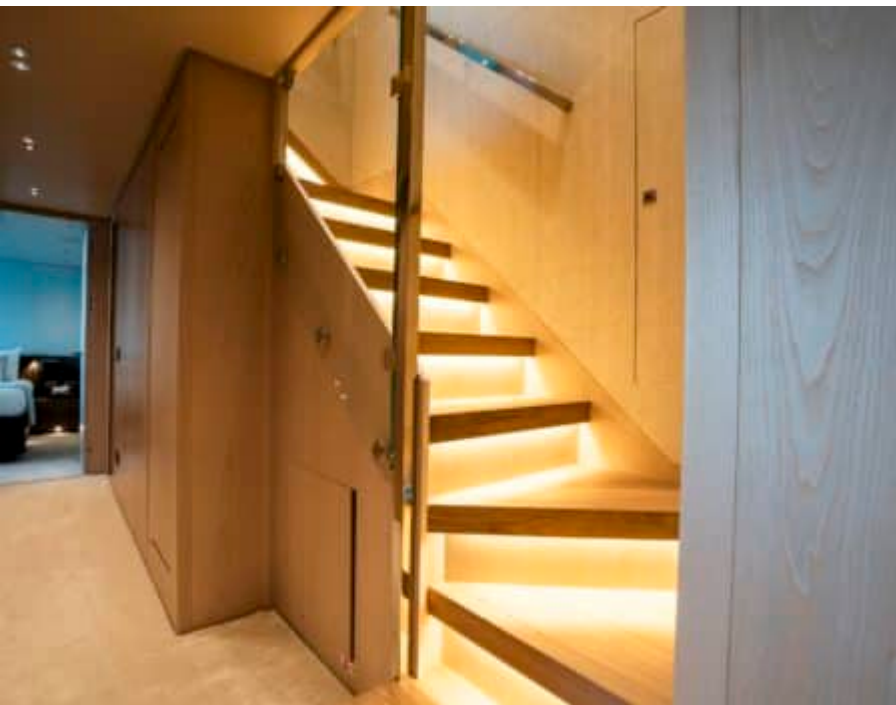














Spécifications



Prix basse saison été / semaine

125 000 €



Prix haute saison été / semaine

145 000 €



Prix basse saison hiver / semaine

125 000 €



Prix haute saison hiver / semaine

145 000 €



Constructeur

Sanlorenzo



Année de construction

2024



Longueur

34.16 m



Navigation

10



Cabines

5

Zone(s) de Navigation hiver

Corsica - Sardinia, French Riviera, Italy & Sicily, Spain & Balearics, West Mediterranean

Zone(s) de Navigation été

Corsica - Sardinia, French Riviera, Italy & Sicily, Spain & Balearics, West Mediterranean

Equipage

6

Vitesse max

23 knots

Vitesse de croisière

12 knots

Consommation

167 L/H

Configuration cabines

5 (3 x Double, 2 x Twin)