



M/Y EXTRA TIME



Longueur
44.27m 145.24
ft.



Personnes
10




















Cabines
5



Equipage
9

M/Y EXTRA TIME

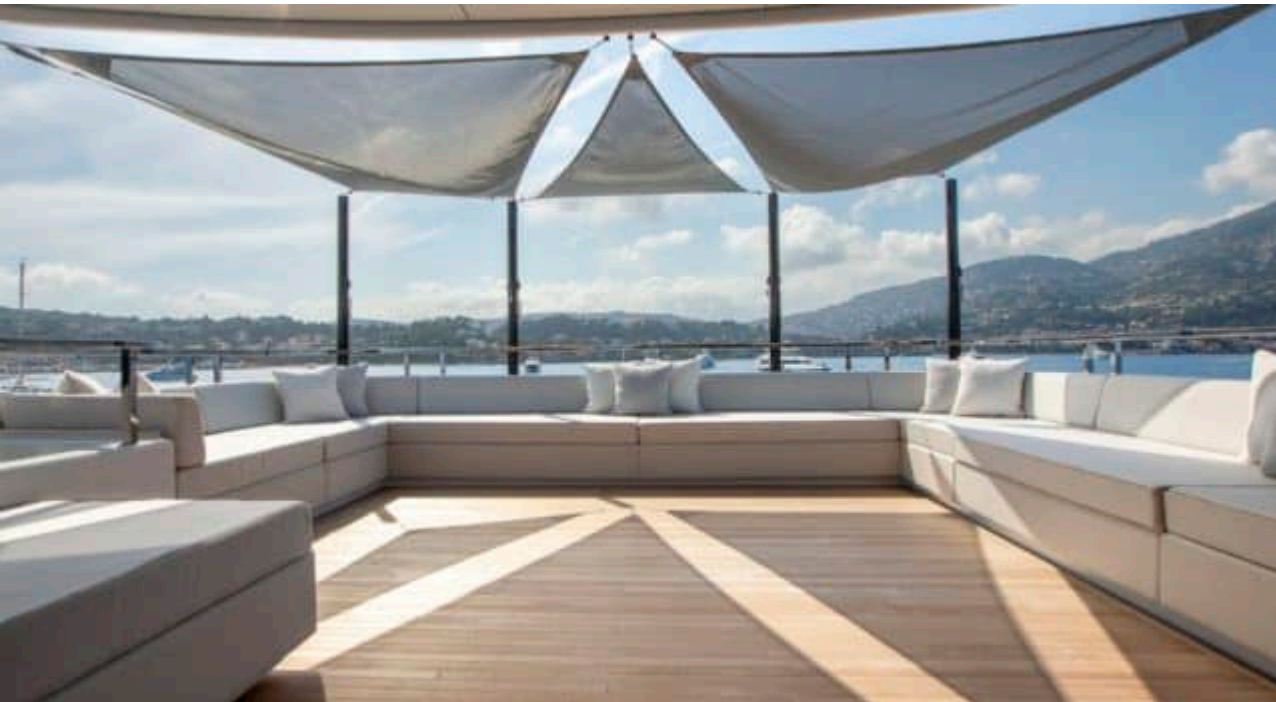
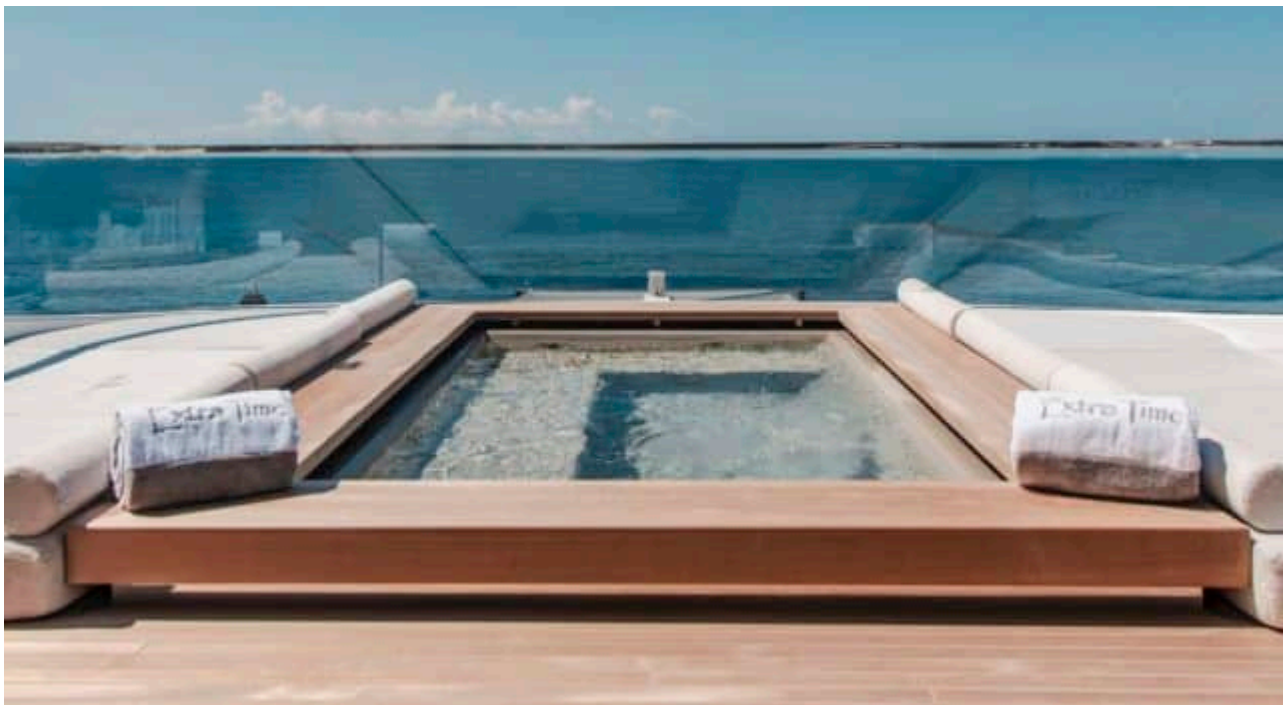
- | | | | | |
|--|---|---|---|---|
| 
Air Conditioning | 
Apple TV | 
E-Foil | 
Electric bicycle | 
Jacuzzi |
| 
Jetski x 2 | 
Jetsurf | 
Seabob x 3 | 
Snorkeling Gear | 
Sound System |
| 
Stabilisers at anchor | 
Stabilisers underway | 
Surf Board | 
Television | 
Tender |
| 
Wifi | 
Windsurf | | | |



DESIGN D'EXTÉRIEUR



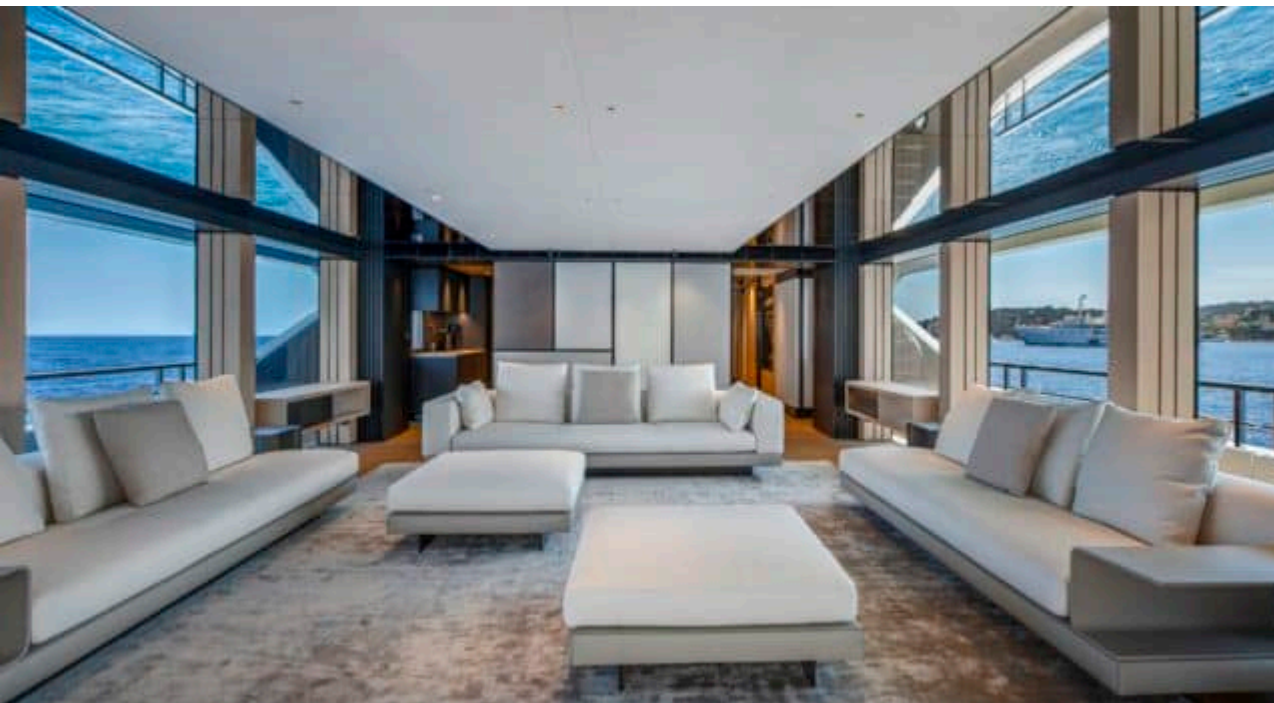
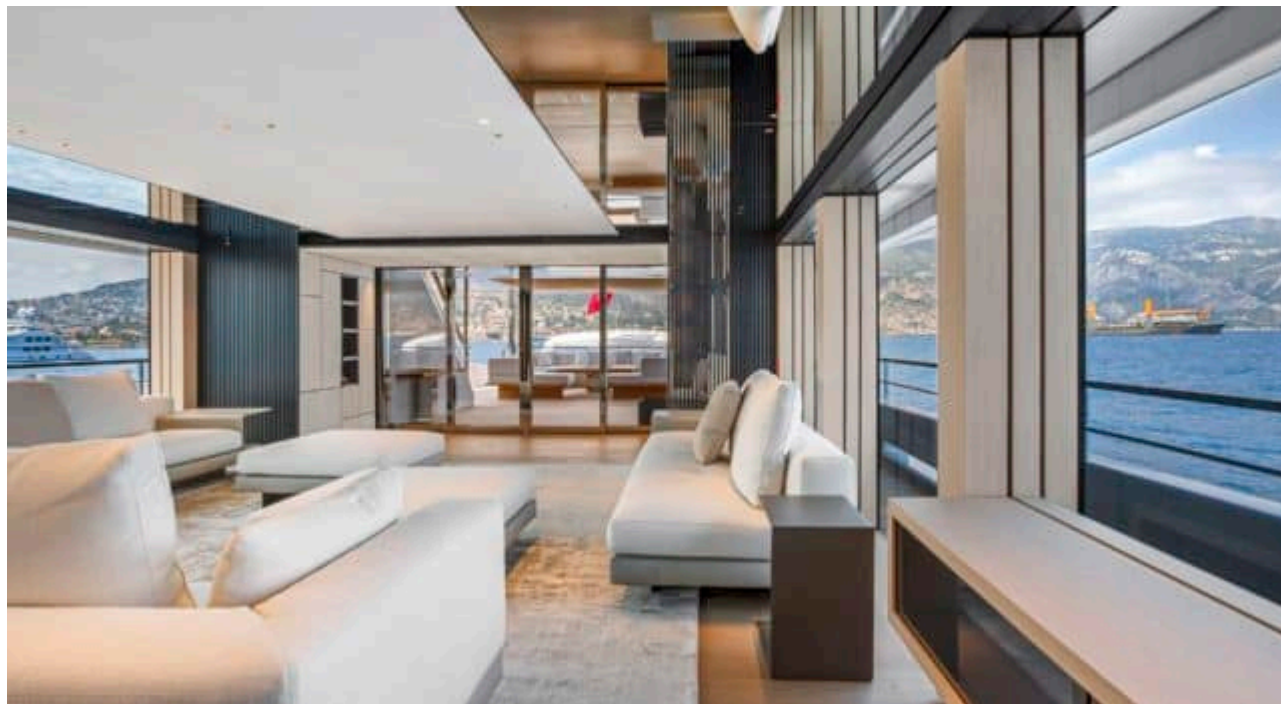


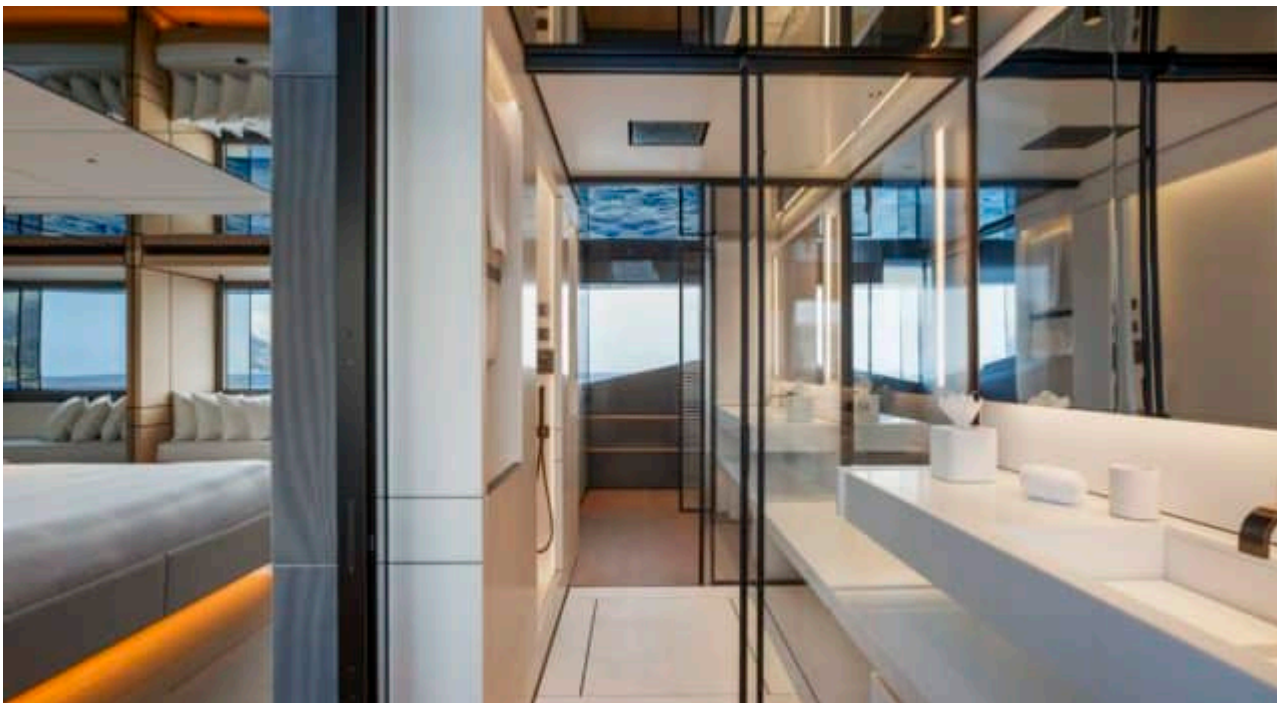


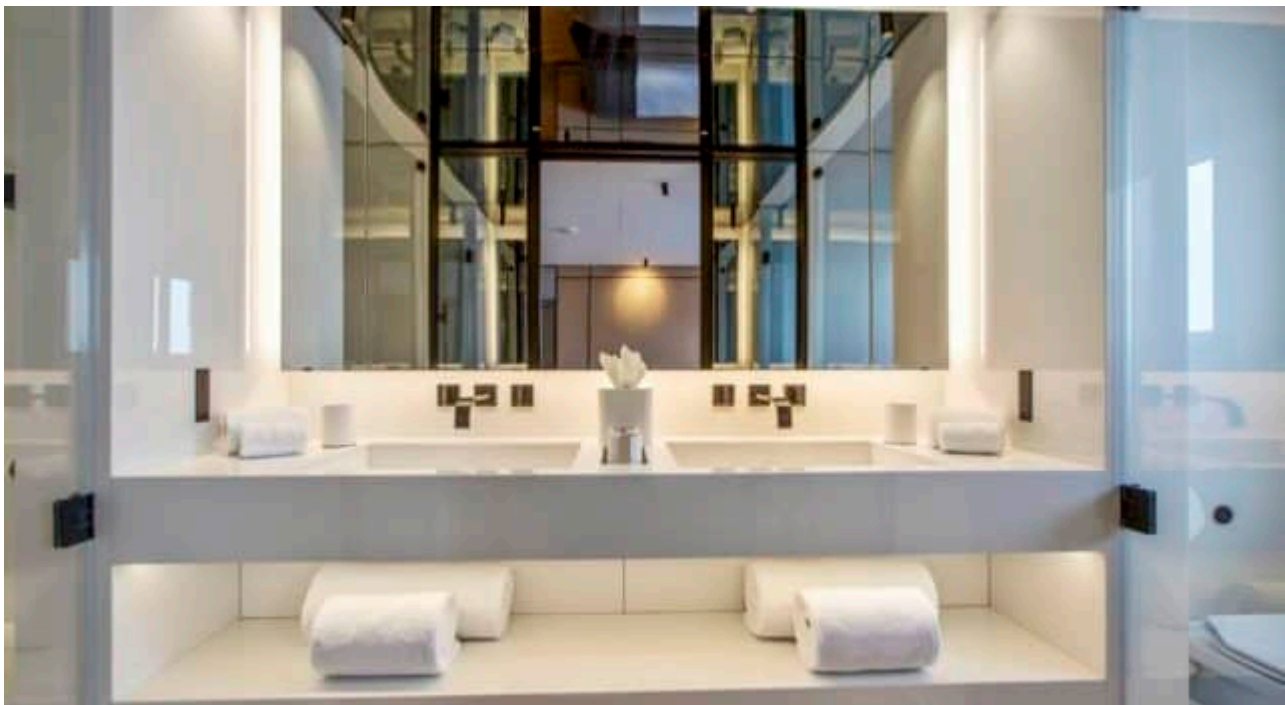


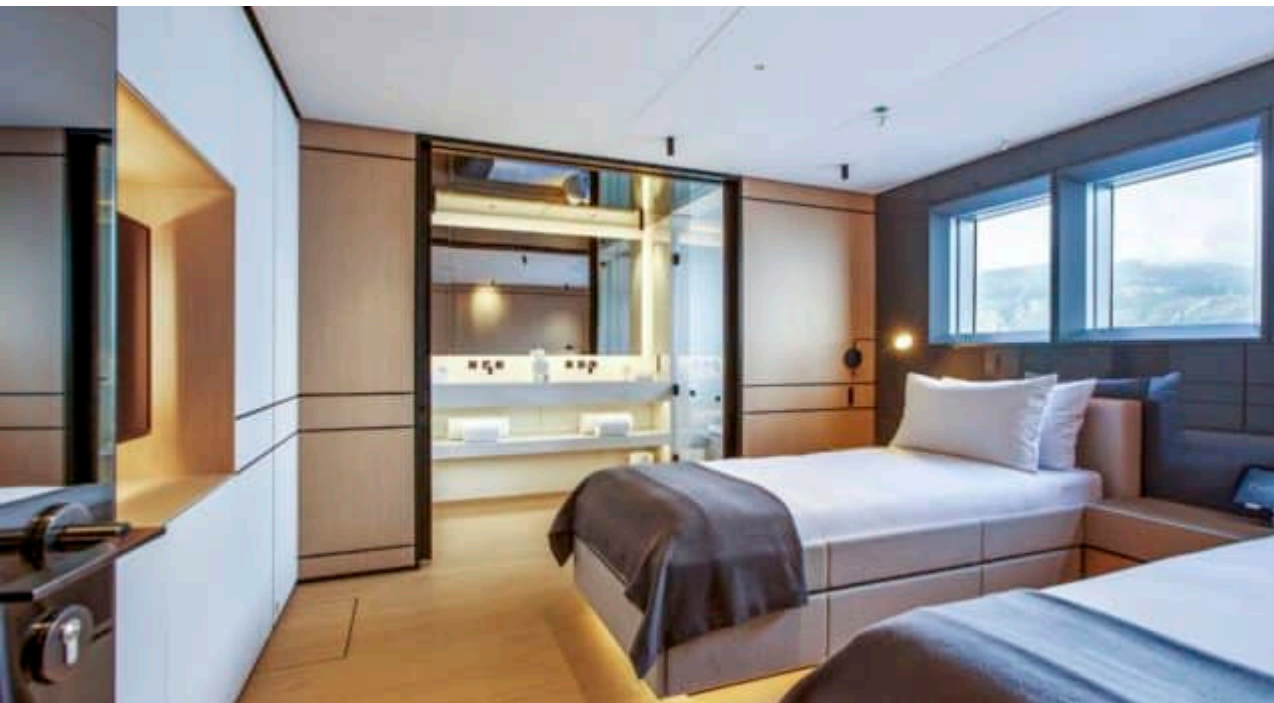
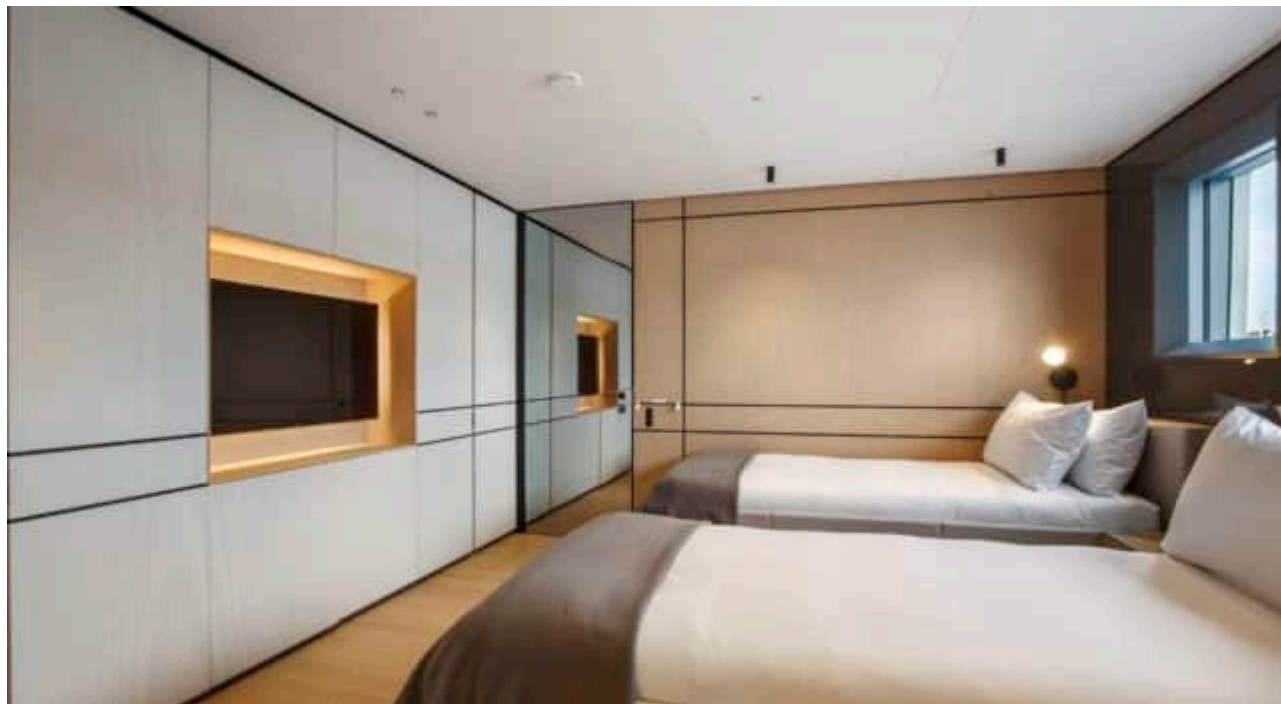
DESIGN D'INTÉRIEUR





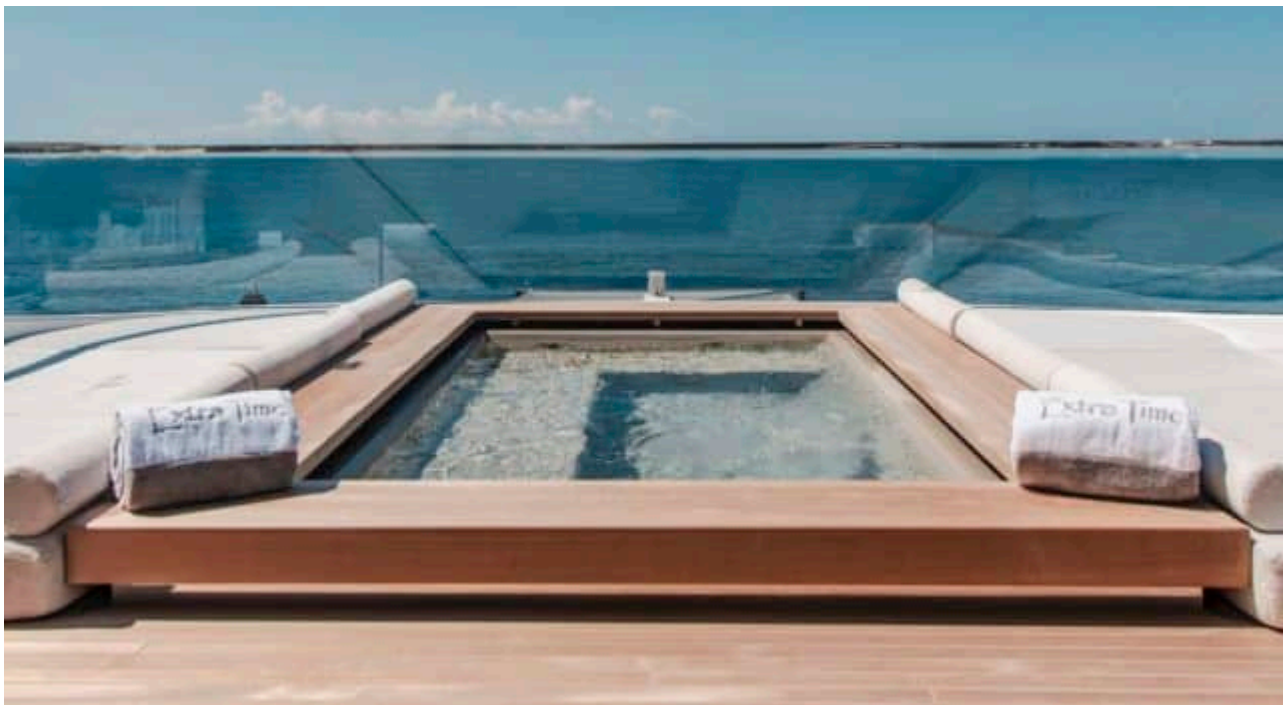


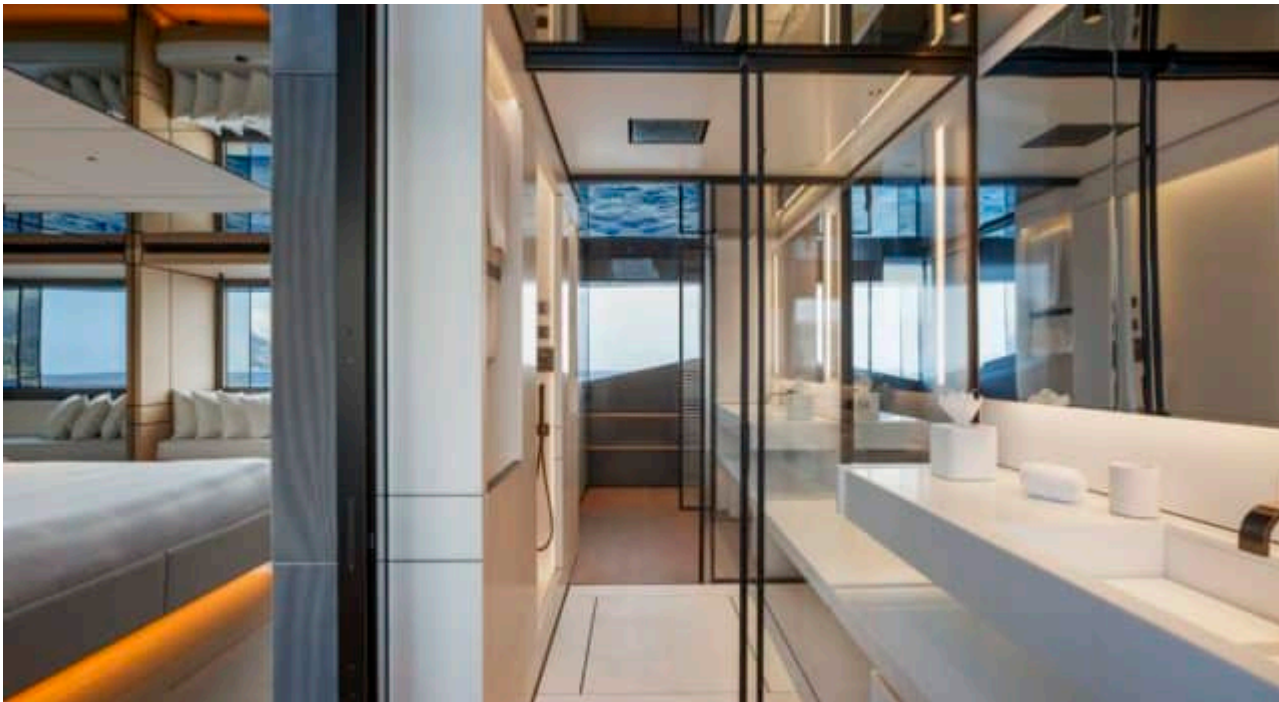




GALERIE MODE DE VIE









Spécifications



Prix basse saison été / semaine

240 000 €



Prix haute saison été / semaine

285 000 €



Prix basse saison hiver / semaine

240 000 €



Prix haute saison hiver / semaine

285 000 €



Constructeur

Conrad



Année de construction

2024



Longueur

44.27 m



Navigation

10



Cabines

5

Zone(s) de Navigation hiver

Zone(s) de Navigation été

Corsica - Sardinia, French Riviera, Italy & Sicily, Spain & Balearics, West Mediterranean

Equipage

9

Vitesse max

12 knots

Vitesse de croisière

11 knots

Consommation

120 L/H

Configuration cabines

5 (3 x Double , 2 x Convertible)